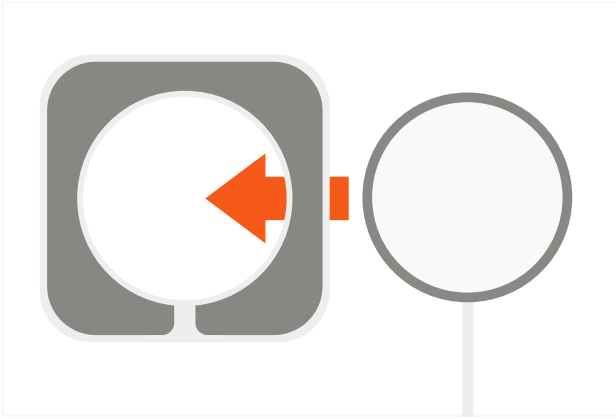
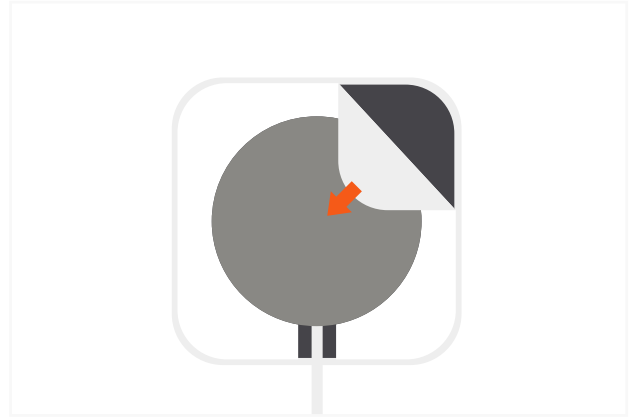


ALUMINUM DOCK FOR MAGSAFE CHARGER

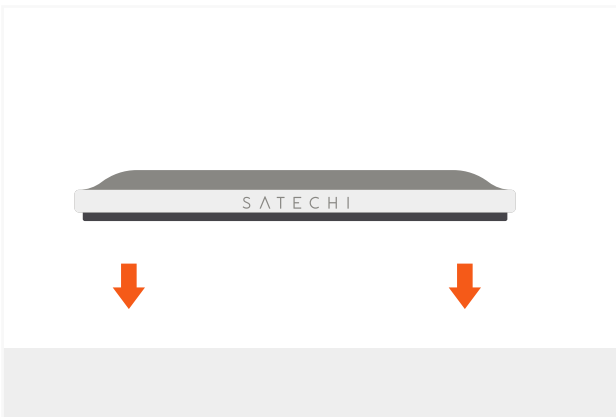
- 1** Insert your MagSafe Charger into the Aluminum Dock.
Charger itself is not included



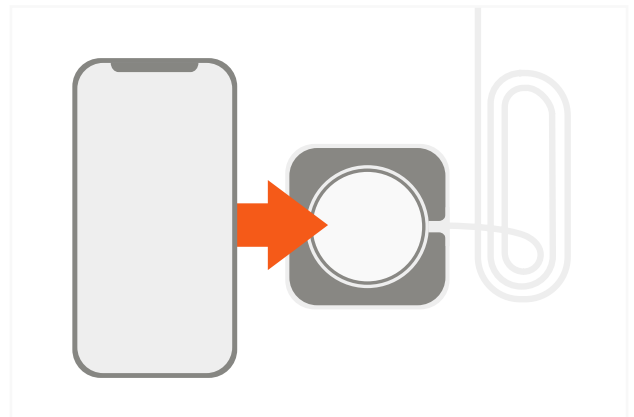
- 2** Peel off the film on the bottom side of the dock.



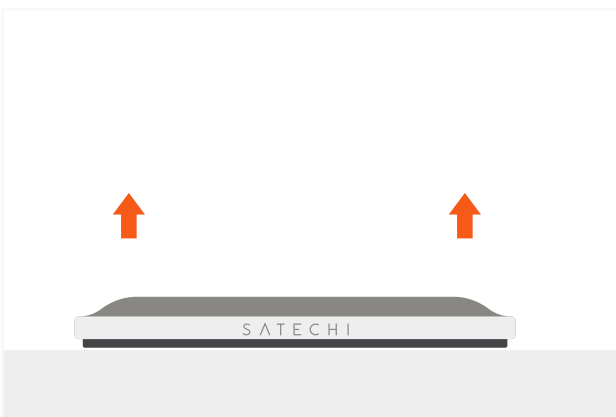
- 3** Gently press the Aluminum Dock onto a flat surface.



- 4** Place your iPhone 12 on top to start charging.



- 5** The Aluminum Dock can be removed and placed in a different location if desired, with its micro suction padding.



- 6** **Note:** our Magnetic Sticker (sold separately) is required for use with iPhone 11 models or iPhone 12 cases without MagSafe.

