



# VPL-230

[www.denver.eu](http://www.denver.eu)

4/2023



FR  
Cet appareil  
est recyclable

À DÉPOSER  
EN MAGASIN



À DÉPOSER  
EN DÉCHÈTERIE



OU

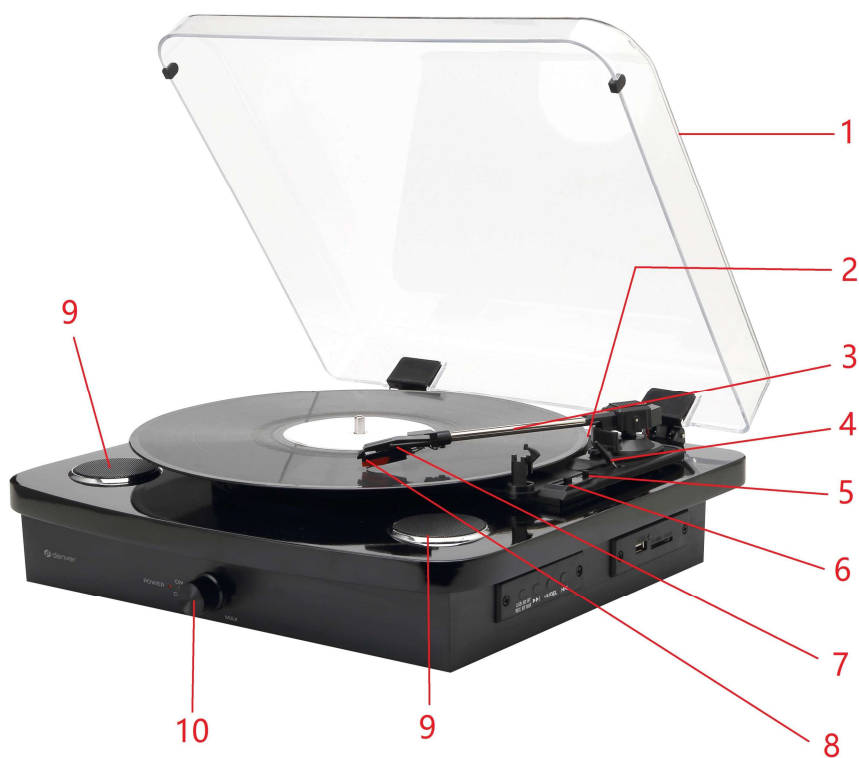
Points de collecte sur [www.quefairedemesdechets.fr](http://www.quefairedemesdechets.fr)  
Privilégiez la réparation ou le don de votre appareil !

# Safety information

Please read the safety instructions carefully before using the product for the first time and keep the instructions for future reference.

1. This product is not a toy. Keep it out of reach of children.
2. Keep product out of the reach of children and pets to avoid chewing and swallowing.
3. Product operating and storage temperature is from 0 degree Celsius to 40 degree Celsius. Under and over this temperature might affect the function.
4. Never open the product. Touching the inside electrics can cause electric shock. Repairs or service should only be performed by qualified personnel.
5. Do not expose to heat, water, moisture, direct sunlight!
6. Please protect your ears against loud volume. Loud volume can damage your ears and risk in hearing loss.
7. Bluetooth wireless technology operates within a range of about 10 m (30 feet). The maximum communication distance may vary depending on the presence of obstacles (people, metal objects, walls, etc.) or the electromagnetic environment.
8. Microwaves emitting from a Bluetooth device may affect the operation of electronic medical devices.
9. The unit is not waterproof. If water or foreign objects enter the unit, it may result in fire or electric shock. If water or a foreign object enters the unit, stop use immediately.
10. The direct plug-in adapter is used as disconnect device, the disconnect device shall remain readily operable. So, make sure there is space around the power outlet for easy access.
11. Do not use non original accessories together with the product as this can make the product functionality abnormal.

# PRODUCT OVERVIEW



1. Dust cover
2. Adapter - Use this when playing 45 RPM records
3. Tone arm
4. Tone arm lift
5. Auto Stop ON/OFF switch
6. Speed selection - Three speeds for choice: 33.3, 45 and 78 RPM.
7. Cartridge
8. Stylus
9. Speaker
10. Power switch / Volume control



11. USB/SD/BT/REC/BT OUT-function mode button

- 12. Next
- 13. Pause/play/DEL button
- 14. Previous
- 15. USB port
- 16. SD card slot



17 18 19 20

- 17. Aux in
- 18. Line out R channel
- 19. Line out L channel
- 20. DC power jack

# SETUP & BASIC OPERATION

## Power Connection

Make sure that operating voltage of the unit corresponds to your home mains voltage. Your unit can be connected to a 5V DC adaptor.

## Connecting to External Audio System

You can listen to your turntable using the built-in speakers but you may wish to connect it to your existing audio system. Connect the audio plugs to the Line input on your mixer or amplifier using an RCA cable (not supplied).

- **Red plug into R channel input.**
- **White plug into L channel input.**

## Playing a Record

Place the record of your choice on the turntable. If required, do not forget to place the 45 RPM adaptor on the record spindle.

Choose the desired playing speed using the speed selection switch between 33.3, 45 and 78 RPM. Turn on the Rotary Power Switch, note that this also controls volume.

Release the tone arm lock.

Carefully raise the tone arm.

Place the stylus vertically over the first track of the record, the turntable will start turning automatically.

Lower the tone arm slowly on to the record to play.

When a record comes to the end, the turntable will stop automatically if the auto-stop switch is in the ON position. If the switch is in the OFF position then it will keep revolving until the tone arm is returned to the tone arm rest.

Lift up the tone arm and replace it on the tone arm rest.

Replace the protective cap on the stylus and close the tone arm lock.

Turn off power.

## **USB/SD Recording**

Place the record of your choice on the turntable. If required, do not forget to place the 45 RPM record adapter on the record spindle.

Choose the desired playing speed using the speed selection switch between 33.3, 45 and 78 RPM. Turn on the Rotary Power Switch, note that this also controls volume.

Release the tone arm lock.

Insert the USB or SD, press and hold the REC button, the flash of the LED indicator besides the USB/SD connector shows that it has started recording.

When you stop the turntable or press REC button, or move the arm to LP, the recording will stop.

## **USB/SD Playing**

Turn on the power and insert the USB/SD and the unit will automatically play music from USB flash or SD card.

If you are playing an LP, you need to move the tonearm back to stop the LP music. USB/SD music will begin automatically if USB/SD is inserted. If BT is on, press USB/SD /BT/REC/BT OUT button to select USB/SD mode, wait for a few seconds, USB/SD music playback will begin.

DEL: to delete the music which you have recorded from LP to USB/SD device, press and hold the DEL button, this will delete the current playing music. Turntable cannot delete music which is not recorded by the turntable.

## **Connect a Bluetooth Device to the Turntable**

Press the USB/SD/BT/REC/BT OUT button to choose Bluetooth mode, a blue LED will begin flashing to indicate the turntable is in pairing mode.

Search for the turntable (named "VPL-230") in the list of Bluetooth devices and connect.

A chime and a steady blue LED light will indicate your device has paired with the turntable successfully.

## **Connect the Turntable to an External Bluetooth Speaker**

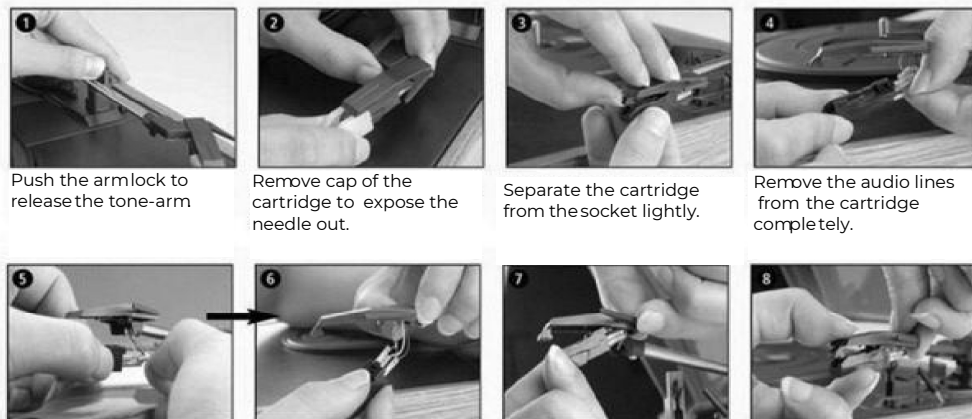
Play a record before turning on pairing mode on your bluetooth speaker. Press the USB/SD/BT/REC/BT OUT button to choose bluetooth mode. The LED light will flash to indicate the turntable is searching for an available bluetooth speaker.

When the turntable connects to a Bluetooth speaker, the LED light stays lit. After the speaker is paired successfully, turntable audio signal can be transmitted to the Bluetooth speaker.

# MAINTENANCE

## REPLACING THE STYLUS

- Refer to the figures 1-8



1 Push the armlock to release the tone-arm

2 Remove cap of the cartridge to expose the needle out.

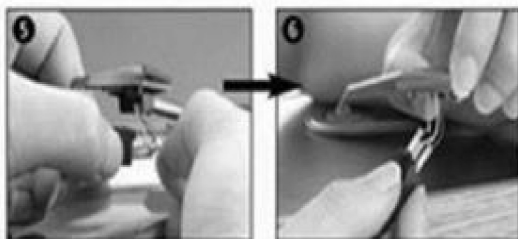
3 Separate the cartridge from the socket lightly.

4 Remove the audio lines from the cartridge completely.

To fit a new one, just proceed in the opposite order, insert the audio lines accordingly, and install the cartridge to the socket lightly.  
NOTE: Please exercise extreme care while performing this operation so as to protect the tone arm and audio line wires from any damage.

## INSTALLING A NEW STYLUS CARTRIDGE

- Refer to the figures 5 & 6



# NOTES

We advise you to clean your records with an anti-static cloth to gain maximum enjoyment from them and to make them have a longer service life.

We would also point out that for the same reason your stylus should be replaced periodically (approximately every 250 hours).

Dust the stylus from time to time using a very soft brush dipped in alcohol (brushing from back to front of the cartridge).

WHEN TRANSPORTING YOUR RECORD PLAYER DO NOT FORGET TO:

- Replace the protective cap on the stylus.
- Put the rest clip into the pick-up arm.



Please notice - All products are subject to change without any notice. We take reservations for errors and omissions in the manual

commercial registration number and address	TECHNOLOGY CO.,LTD NO. 3, PHASE 2, JINHE INDUSTRIAL ZONE ZHANGMUTOU TOWN,DONGGUAN CITY,
--	---

ALL RIGHTS RESERVED, COPYRIGHT DENVER A/S



denver.eu



Electric and electronic equipment contains materials, components and substances that can be hazardous to your health and the environment, if the waste material (discarded electric and electronic equipment) is not handled correctly.

Electric and electronic equipment is marked with the crossed out trash can symbol, seen above. This symbol signifies that electric and electronic equipment should not be disposed of with other household waste, but should be disposed of separately.

All cities have established collection points, where electric and electronic equipment can either be submitted free of charge at recycling stations and other collection sites, or be collected from the households. Additional information is available at the technical department of your city.

Hereby, Denver A/S declares that the radio equipment type VPL-230 is in compliance with Directive 2014/53/EU. The full text of the EU declaration of conformity is available at the following internet address: [denver.eu](http://denver.eu) and then click the search ICON on topline of website.

Write model number: VPL-230. Now enter product page, and RED directive is found under downloads/other downloads.

BT Operating Frequency Range: 2.402GHz-2.480GHz

Max Output Power: 2 x 10 W / 2 x 1 W RMS

DENVER A/S

Omega 5A, Soeften

DK-8382 Hinnerup

Denmark

[www.facebook.com/denver.eu](http://www.facebook.com/denver.eu)

# Contact

## Nordics

**Headquarter**  
Denver A/S  
Omega 5A, Soeften  
DK-8382 Hinnerup  
Denmark

Phone: **+45 86 22 61 00**  
(Push "1" for support)

E-Mail  
For technical questions, please write to:  
**support.hq@denver.eu**

For all other questions please write to:  
**contact.hq@denver.eu**

---

## Benelux

**DENVER BENELUX B.V.**  
Barwoutswaarder 13C+D  
3449 HE Woerden  
The Netherlands

Phone: **0900-3437623**

E-Mail: **support.nl@denver.eu**

---

## Spain/Portugal

**DENVER SPAIN S.A**  
Ronda Augustes y Louis Lumiere, n° 23 – nave 16  
Parque Tecnológico  
46980 PATERNA  
Valencia (Spain)

**Spain**  
Phone: +34 960 046 883  
Mail: **support.es@denver.eu**

**Portugal:**  
Phone: **+35 1255 240 294**  
E-Mail: **denver.service@satfiel.com**

## Germany

**Denver Germany GmbH Service**  
Max-Emanuel-Str. 4  
94036 Passau

Phone: **+49 851 379 369 40**

E-Mail  
**support.de@denver.eu**

**Fairfixx GmbH**  
Repair and service  
Rudolf-Diesel-Str. 3 TOR 2  
53859 Niederkassel

(for TV, E-Mobility/Hoverboards/Balanceboards,  
Smartphones & Tablets)

Tel.: **+49 851 379 369 69**  
E-Mail: **denver@fairfixx.de**

---

## Austria

**Lurf Premium Service GmbH**  
Deutschstrasse 1  
1230 Wien

Phone: **+43 1 904 3085**  
E-Mail: **denver@lurfservice.at**

---

If your country is not listed above,  
please write an email to  
**support@denver.eu**



DENVER A/S  
Omega 5A, Soeften  
DK-8382 Hinnerup  
Denmark

denver.eu  
facebook.com/denver.eu