

Digital Wi-Fi picture frame with 10.1" Touchscreen-LCD-Display

User's Manual



Art. 21257

Model BRAUN DigiFrame 1019 WiFi black

Copyright © 2017 BRAUN Photo Technik GmbH. All rights reserved.

Cautions

Precautions and maintenance

- For indoor use only.
- To avoid risk of fire or electric shock, do not expose the unit to moisture or condensation.
- To avoid overheating, do not block the ventilation holes on the back of the digital photo frame.
- Keep the digital photo frame out of direct sunlight.
- Do not dismantle the digital photo frame. There is a risk of electric shock and there are no user-serviceable parts inside. Dismantling the digital photo frame will void your warranty.

Cleaning the LCD Screen

- Treat the screen with care. The screen of the digital photo frame is made of glass and is easily broken or scratched.
- If fingerprints or dust accumulate on the LCD screen, we recommend using a soft, non-abrasive cloth such as a camera lens cloth to clean the LCD screen.
- Moisten the cleaning cloth with the cleaning solution and apply the cloth to the screen.

WARNING:

Please power off the unit before inserting or removing a card or USB device.

Failure to do so may cause damage to the card/USB and the unit. To reduce the risk of fire or electric shock, do not expose this appliance to rain or moisture.

Note: This device is for private use only and not designed for commercial utilization.

Introduction:

Thank you for purchasing the BRAUN DigiFrame 1019 WiFi black. The product is designed to allow quick and easy viewing of photos taken from your digital camera, mobile phone, or from a memory storage card. Please read this user manual carefully to learn the correct way to use the digital photo frame.

Features:

1. Supported picture formats: JPEG
2. Supported memory cards: Micro SD
3. USB-connection: Micro USB
4. Auto slideshow
5. Pre-installed Frameo-Software
6. 16 GB internal memory
7. Adjustable brightness
8. Copy and delete files in the in-built memory & memory card
9. OSD languages: English and other languages selectable
10. Transfer photos and short videos possible (15s)

Packaging Check List:

- | | |
|--|---------|
| 1. 10,1 Inch (25,7 cm) digital photo frame | 1 piece |
| 2. AC/DC adapter | 1 piece |
| 3. User's manual | 1 piece |
| 4. Bracket | 1 piece |
| 5. Screw | 1 piece |

Contents

1. Getting started.	4
2. frameo app.	4
3. terms of use.	4
4. Welcome to Frameo.	5
5. Operating informations.	5
6. Settings.	6
6.1 My frame.	6
6.2 Manage photos.	6
6.3 My Friends.	7
6.4 Display and Slideshow.	7
6.5 WiFi.	8
6.6 Backup und Restore.	8
6.7 About.	8
7. Stand Instructions.	9
8. Technical Specifications.	9
9. Privacy.	9
10. Technischer Support.	10
11. Radio and TV interference statement.	10

1. Getting started

Put the digital photo frame with installing bracket on a flat position steadily, then plug one end of the AC adapter into a standard 100 – 240 V AC electrical outlet and the other end into the DC IN slot on the right side of the frame.

Slowly remove the protective film covering on the frame.

First, to set up your frame follow the quick start guide included in the package.

If you are new to using frameo then start by following the terms of use on page 4 or follow the on screen guide when powering it on for the first time.

Once you have set up your frameo, start connecting it to your friends and family.

2. frameo app

To send photos to your frame, use the frameo app for iOS or Android



Find the frameo app on:

[Google play](#) by searching for “frameo”

[App Store](#) by searching for frameo

3. Terms of use

When starting your frame for the first time, you will need to setup the frame.

ALL SETTINGS CAN BE CHANGED THROUGH THE SETTINGS MENU AFTERWARDS.

- First you start by selecting a language. This will be the language used throughout frameo.
- Connect your frame to the internet by connecting it to a Wi-Fi.

IF A NEWER VERSION OF THE FRAMEO SOFTWARE IS AVAILABLE, THEN YOU WILL BE PROMPTED WITH AN UPDATE DIALOG. IT IS RECOMMENDED TO UPDATE YOUR FRAME IMMEDIATELY IF PROMPTED.


- Enter your name, and the location where you have placed your frame e.g. “Living room”, “Kitchen” or “Office”.

4. Welcome to frameo

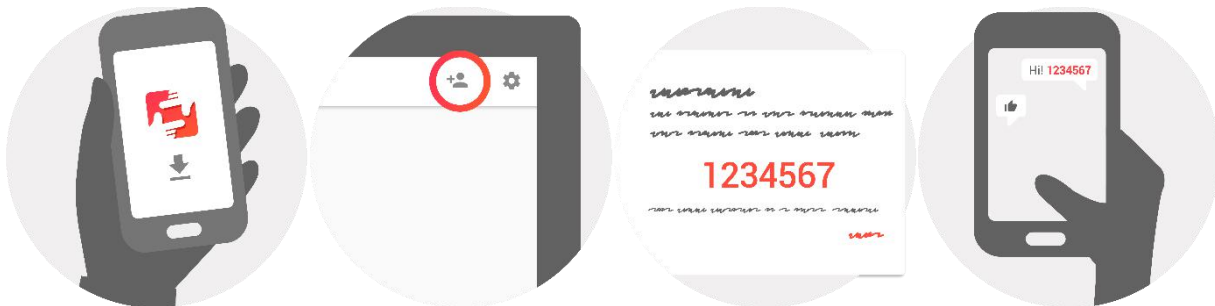
Start by connecting with your friends and family by providing them with a unique code from your frame.

If you want to be able to send photos to the frame yourself, start by downloading the app for iOS or Android on [App Store](#) or [Google Play](#). Then use the code to connect your frame and app as described below.

Connecting a new friend:

- Make sure that your friend has downloaded and installed the frameo app
- Click the add friend icon on your frame . A dialog will appear showing a unique code which is valid for 24 hours.
- Now share this code in whatever fashion you prefer e.g. SMS, E-Mail, IM, phone call, to your friend.

ONCE YOUR FRIENDS HAVE ADDED THE CODE IN THEIR FRAMEO APP, THEY WILL AUTOMATICALLY APPEAR ON YOUR FRAME AND BE ABLE TO SEND YOU PHOTOS.





5. Operating information

You interact with your frame through its touchscreen.

Swipe left or right to go through your photos.

To access the menu bar, simply tap once on the screen, this will show the menu.

In the menu bar you will find quick access to the add friends dialog  and the settings menu 

6. Settings

Through settings, you can personalize your frame to your needs.

6.1 My frame

Frame name:

Changes the name of your frame. This is also the name the connected friends and family will see in their list of connected frames.

Frame location:

Changes the location of your frame. This is the location displayed on your friends' and family's list of connected frames which can help to distinguish frames from each other.

Set language:

Sets the language throughout your frame.

Sleep mode:

frameo offers a sleep mode which turns off the screen to reduce power consumption while you e.g. are sleeping. Its default setting is to turn off the screen at 23:00 and turn on the screen again at 07:00.

To change this just set the sleep mode start/end time.

YOUR FRAME IS NOT POWERED DOWN OR IN STANDBY, SO YOU WILL STILL BE ABLE TO RECEIVE PHOTOS DURING SLEEP MODE.

6.2 Manage photos

Show/hide photos:

Select which photos to show/hide by tapping the particular photos you wish to show/hide. Hidden photos will NOT be deleted from your frame, you can always select them to be shown again.

Use  to select or deselect all

Delete photos:

Select photos that you want to permanently delete from your frame by tapping the photo.

Use  to select or deselect all and  to delete the selected photos.

Import photos:

Allows you to import photos from an external SD card.

BEFORE YOU TRY TO IMPORT PHOTOS FROM A SD CARD, MAKE SURE YOU HAVE A SD CARD WITH PHOTOS ON INSERTED INTO YOUR FRAME.

Start by selecting the photos that you want to import onto your frame.


Once selected tap the import button  to start the import process.

IT IS CURRENTLY NOT POSSIBLE TO ADD A CAPTION OR DEFINE THE MOST IMPORTANT PART OF THE PHOTO WHEN USING THE IMPORT FUNCTION. ALTERNATIVELY ADD YOURSELF TO YOUR FRIEND LIST AND SEND THEM USING THE APP.


6.3 My Friends

This list contains all the people that are allowed to send photos to your frame.

Remove person

To remove a person from this list, thereby removing their permission to send you photos, tap the delete icon . You will then be asked to confirm the removal and if you would like to remove all photos received from this person.

Add person

To allow a new person to send you photos, simply tap the add friend button  and share the presented code in whatever way you prefer.

6.4 Display and Slideshow

Timer

Define the duration a photo should be displayed.

Show caption

Sets whether or not to display the captions that your friends have sent with the photo. Check to display captions. Uncheck to hide captions.

Brightness level

Adjust the brightness level of the screen.

Video playback

Determines how videos should be played when autoplay is enabled.

- Loop videos: The video will loop until the slideshow timer is up.
- Play once: The video will play once and show it's thumbnail until the timer is up.
- Play once and continue: The video will play once and continue to the next photo, or video, once it completes.

Playback audio

Sets the default audio playback behaviour of videos in the slideshow to ON or OFF. Audio can always be manually enabled/disabled regardless of this setting.

Video volume

Adjust the volume level for video sounds on the frames.

6.5 Wi-Fi

Set which Wi-Fi the frame should be connected to.

6.6 Backup and Restore

Backup frame to SD card

Tap to make a backup of your photos, friends and settings. The time of latest successful backup will be displayed.

ANY EXISTING BACKUP ON THE SD CARD WILL BE OVERRIDDEN!

Automatic backup

If checked, your frame will automatically take a backup within 30 hours of you receiving new photos or making changes on your frame.

REQUIRES THAT YOU HAVE INSERTED A WRITEABLE SD CARD INTO THE FRAME.

Restore from backup

BEFORE YOU ATTEMPT TO RESTORE YOUR FRAME, START BY CONFIRMING THAT YOUR BACKUP IS UP-TO-DATE.

To restore from a backup, you must first reset the frame. It is important to note that you cannot restore to a new Frameo frame

Reset frame

Removes all data from your frame. This will permanently remove all your photos, friends/connections and settings.

6.7 Update

Check for update

Check if an update is available for your frame.

Share anonymous analytics data

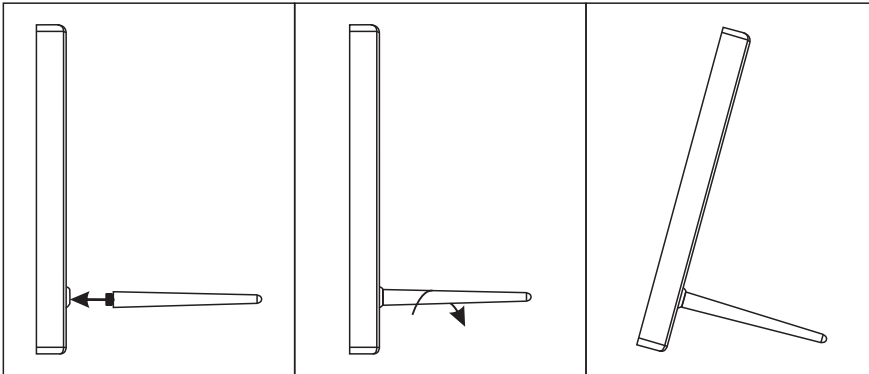
Sharing anonymous analytics data helps us tremendously with improving the frameo software. We understand if you do not wish to share this data with us. Set checked if you wish to help us improve frameo. Set unchecked to deny the sharing of anonymous analytics data.

Guide

Opens the quick start guide, which was shown when you first started the frame.

7. Stand Instructions

Insert the bracket into the slot of the digital photo frame and rotate the bracket clockwise. Please make sure the stand is locked in before you put it on the table steadily. Please refer to the illustration below.



8. Technical Specifications

- **Adapter** : Input AC 100-240 V 50/60 HZ, Output DC: 5 V/2 A
- **Picture Formats**: JPEG
- **Video formats**: MP4
- **Memory Cards**: Micro SD
- **USB**: Micro USB
- **Screen Parameter**:
 - Screen size: 10.1 Zoll (25,7 cm) LCD
 - Resolution: 1280 x 800 Bildpunkte
 - Aspect ratio: 16:10
 - Brightness: 200 cd/m²
 - Viewing angle : ca. 180° (horizontal)
 - Working temperature: 0 °C bis 40 °C, humidity: 10 bis 85 %

9. Privacy

For more information regarding privacy, please visit privacy.frameo.net

10. Technical Support

We are committed to providing the best customer service support. If you need assistance with your BRAUN product, please contact the BRAUN Technical Support department prior to returning this device. Reach out to us in any of the following ways:

E-Mail: post@braun-phototechnik.de

Web: www.braun-phototechnik.de

+49 (0) 7457 / 9465-60

11. Radio and TV Interference Statement

WARNING! This equipment has been tested and found to comply with the limits of a Class B digital device, pursuant to part of the CE rules. These limits are designed to provide reasonable protection against harmful interference in a residential installation.

This equipment generates uses and can radiate radio frequency energy and, if not installed and used in accordance with the instruction, may cause harmful interference to radio communications. However, there is no guarantee that interference will not occur in a particular installation. It can be determined, if this equipment does cause harmful interference to radio or television reception, by turning the equipment off and on.

BRAUN PHOTO TECHNIK GmbH

Merkurstraße 8

72184 Eutingen / GERMANY

Tel.: +49 (0) 7457 / 9465-60