



WinTV 8 US Help

The WinTV 8 Main Window



Fundamental Operation

The majority of options can be selected by clicking on the **left** hand mouse button.

Double-click the left hand mouse button inside the TV window to change window mode (normal view, TV window only, full screen).

Click the **right hand** mouse button inside the TV window to open the **Menu**.

Nearly all functions can be accessed using the **keyboard**.

Control Buttons



WinTV Settings

Clicking this button will open the **WinTV Settings** dialog.

On Screen Display

Clicking this button will display channel information.

Open File for Playback

Click this button to open a previously recorded file for playback.

Snapshot

Click the **Snapshot** button to save a still image of the currently displayed TV / video.

Start Live TV

Click the **TV** button to watch Live TV.

Closed Caption

Click to toggle closed caption on or off.

Context Menu

Click to open the open the **Menu**

Start Recording

Starts recording the currently watched channel.

Terminate Recording / Exit Live TV

Click this button to exit a recording, or to exit Live TV mode.

Pause Live TV / Change Playback Position

The big button in the middle pauses Live TV. Click the same button again to continue Live TV. The other buttons do: Skip back 60 seconds, skip back 30 seconds, skip forward 10 seconds, and skip forward 60 seconds.

Change Channel

Click the Channel Up or Channel Down button to change channel.

Mute Audio

This button allows you to turn the sound on or off.

Change Audio Volume

Use this slider bar to change the audio volume.

Pause Buffer Indicator

The white bar below the TV window shows how much the pause buffer is filled with content. The bar grows with time. You can click your mouse button on the white bar to directly jump to a certain position in the pause buffer. The timer will show how far back the video is from Live TV.

Minimize Application Window, Enter Full Screen Mode, Exit Application

- Click on the minimize button to minimize the WinTV application to the task bar. (Click on the WinTV icon in the task bar to maximize.)
- Click the maximize button to watch the TV in full screen. To return to windowed mode, double click the left hand mouse button or press the <Esc> key.
- Click the x button to close the WinTV application.

Resize Application Window

To set the WinTV window size, hold down the left mouse button when it's over the lower right corner of the WinTV window, drag it to the preferred size, and then release the mouse button. You can set different sizes for the normal view and No-Title mode.

WinTV Settings

Click the WinTV Settings button or Configuration under the Options Menu in the main TV window to open Settings.

Settings is separated into several tabs.

"**General**" - General settings.

"**Capture**" - To specify the locations for recordings, timeshift buffer file and snapshots.

"**Devices**" - Tuner setup for channel search and configuration of external video inputs.

"**All Channels**" - To manage your channels.

"**Favorites**" - To define your favorite channels.

"**Parental Control**" - To enable parental control (North America only).

"**Advanced Options**" - Advanced options.

"**WinTV Extend**" - To Configure Wintv Extend (optional)

Settings / "General"



Section "Version"

Version: The current version of WinTV 8 installed is displayed, as well from what CD version.

Check online for new versions: If enabled, WinTV will check on startup whether a new software version is available. If so, you will be notified.

Section "Languages"

User Interface Language: Select the language of the application user interface here. Changes take effect after restarting the application.

Preferred Audio Language: Specifies the preferred audio language for multi language-broadcasts.

Closed Caption Service: Specifies the preferred subtitles language for broadcasts with multi lingual subtitles

Use SPDIF Output: If this option is enabled, audio will be routed to the S/PDIF output of your soundcard.

Show Captions: If enabled, subtitles are displayed (when available).

Section "Video Renderer"

Overlay, VMR7, VMR9 or EVR: Specifies the video renderer to be used. The video renderer is a software interface to your display adapter. Changes take effect after restarting the application.

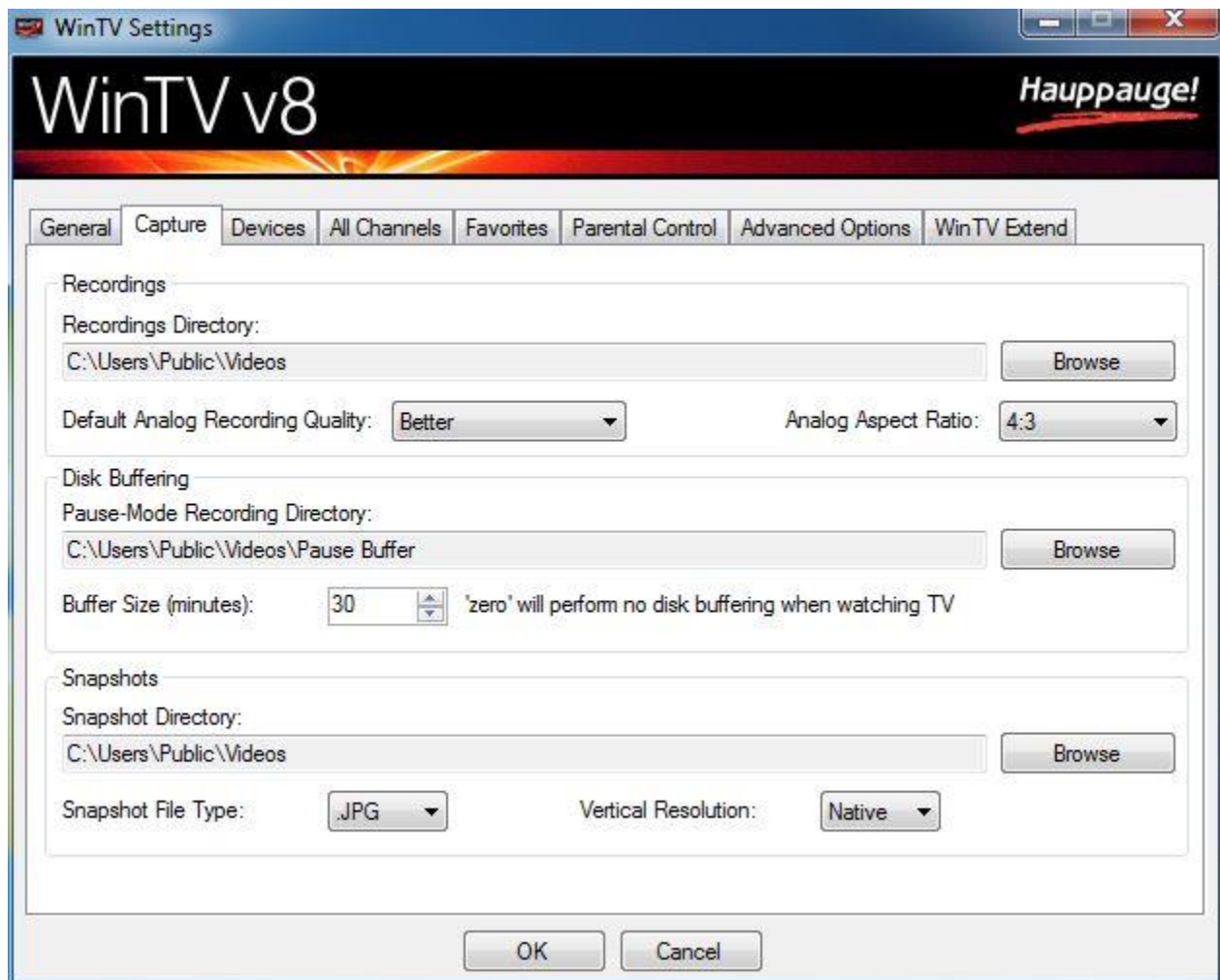
Use hardware acceleration when possible: If enabled, the hardware acceleration, that newer display adapters offer, is used. This may improve system performance when displaying video. Changes take effect after restarting the application.

Section "Monitor Shape"

4:3 or 16:9: Select the aspect ratio of the connected computer monitor here.

Auto-size window: If this option is enabled, the aspect ratio of the application window is always kept constant when resizing the window.

Settings / "Capture"



Section "Recordings"

Recordings Directory: Specifies the folder where recordings are saved. You can click on **Browse** to select a different folder. Also snapshots are placed here.

Default Analog Recording Quality: Select the quality for recordings from analog TV / video here. (Only for products with analog TV tuner / video inputs.)

Analog Aspect Ratio: Select the aspect ratio for recordings from analog TV /video (Only for products with analog TV tuner / video inputs.)

Section "Disk Buffering"


Disk Buffering is used to enable time-shift, where the TV content is continuously buffered to your hard disk.

Pause-Mode Recording Directory: Specifies the folder where the temporary disk buffer file is placed. You can click on **Browse** to select a different folder.

Buffer Size (minutes): Sets the duration in minutes for which the TV content is buffered to hard disk. **Enter 0 minutes to disable disk buffering.** Changes take effect after restarting the application.

Section "Snapshots"

The following settings refer to snapshots, i.e. still images of the currently displayed TV / video.

Snapshots are generated by pressing the space bar or Snapshot  button.

Snapshot Directory: Specifies the folder where snapshots are saved. You can click on **Browse** to select a different folder.

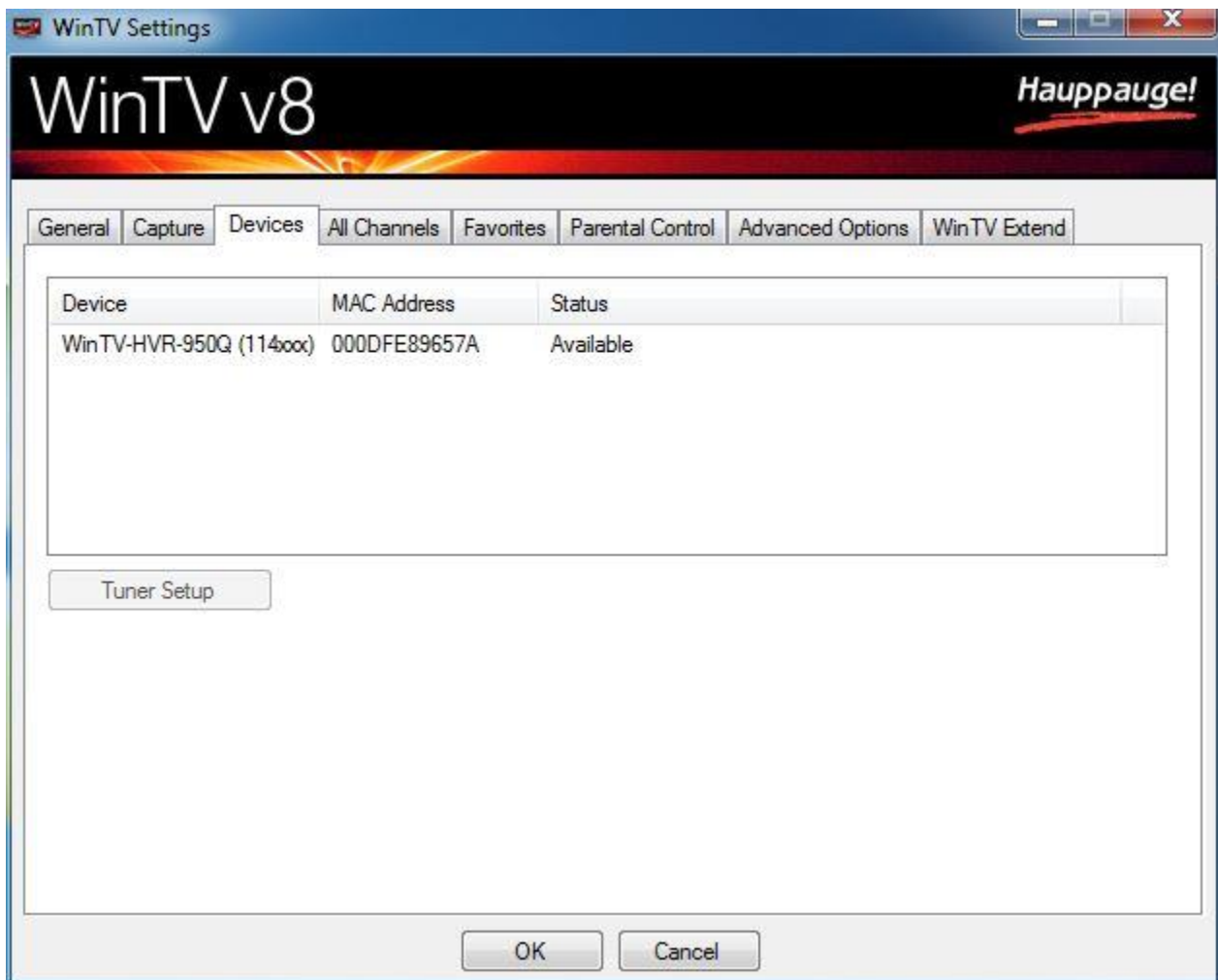
Snapshots File Type: Specifies the file type of the saved snapshot file JPG or BMP.

Vertical Resolution: Specifies the vertical resolution of the image, i.e. the number of lines. You can select between:

- Native: The image is saved in the currently displayed size.
- 480 - 1080: The image is zoomed to the selected number of lines, before it is saved.

Please note: Image quality directly depends on the size of the displayed TV / video image. The larger the TV / video image is the better is the quality of the snapshot.

Settings / "Devices"

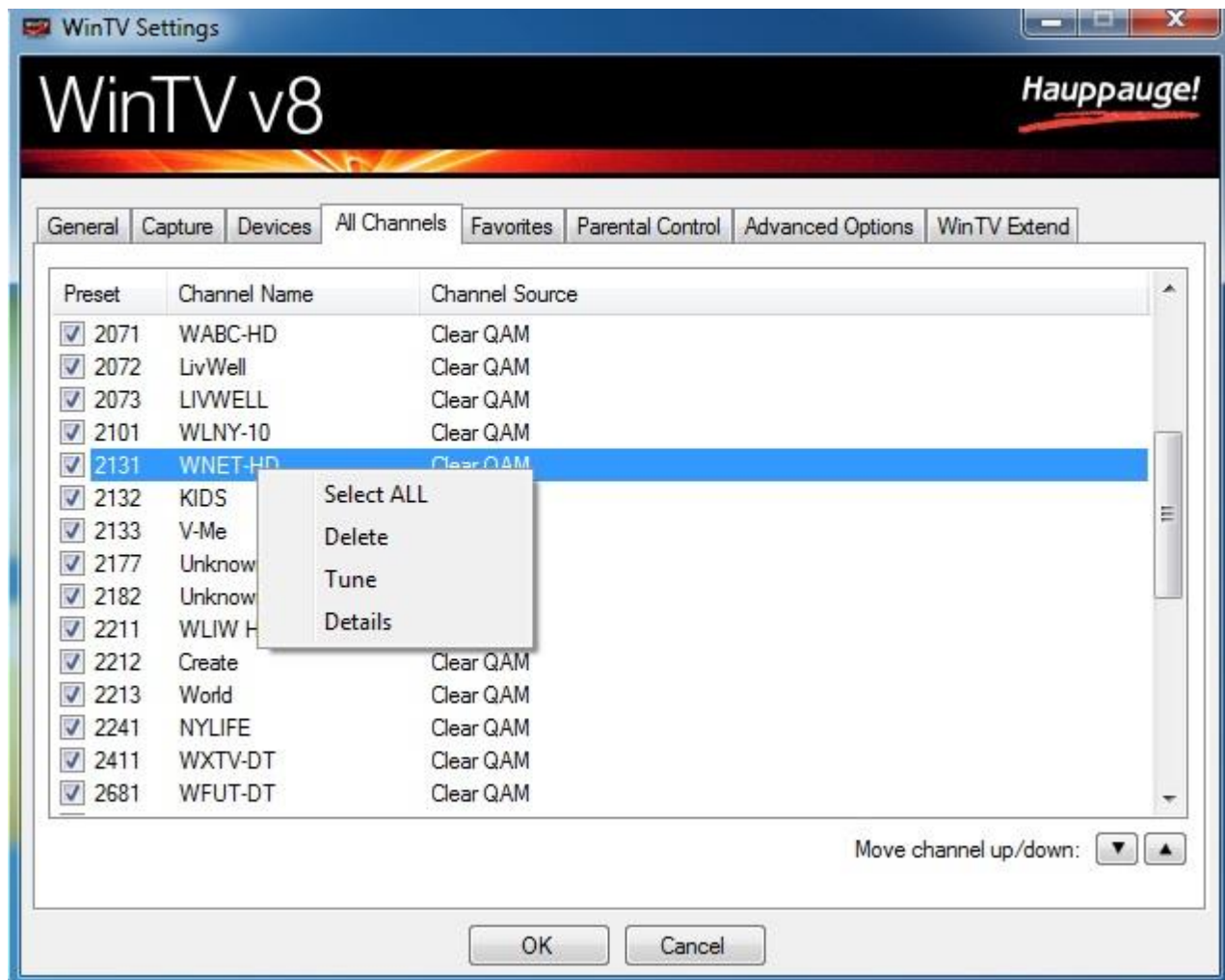


To set up the TV tuner and scan for channels, select the device from the list and click on "**Tuner Setup**". The Device Setup Wizard will open.

If **Tuner Setup** is grayed out, the product is not selected.

Please refer to the **Device Setup Wizard** section for the available options

Settings / "All Channels"



All channels from the channel database are listed.

With the checkmark in the first column, channels can be enabled or disabled. Unchecked channels will be hidden from the channel list in the main menu window.

Channels are sorted only based on the Preset number

Right click on a channel to open a context menu:

Menu option "Select All": Selects all channels in the list.

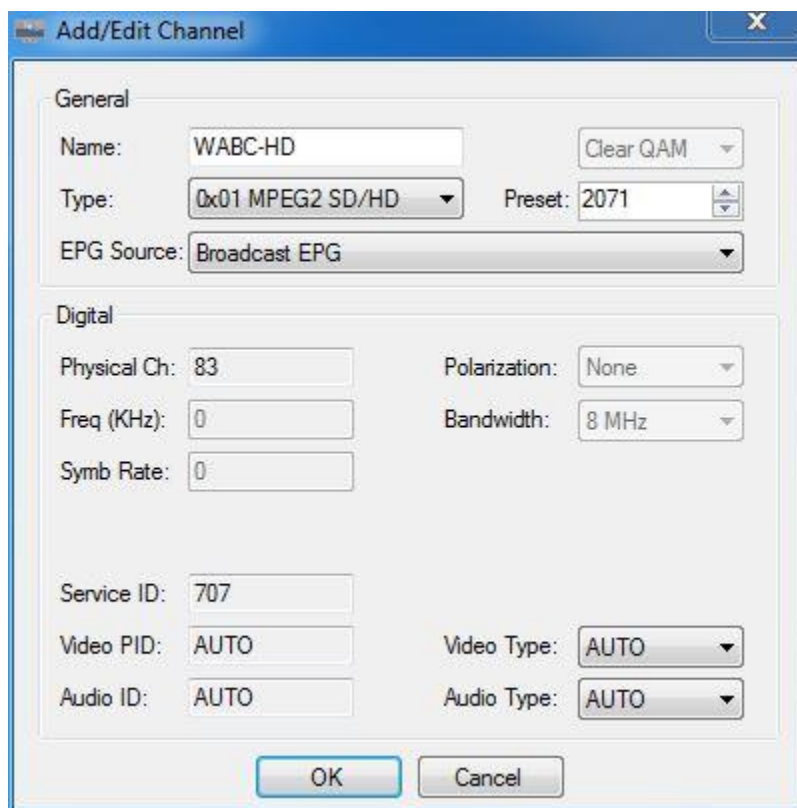
Menu option "Delete": Deletes the selected channel(s) permanently from the database.

Menu option "Tune": Tunes to the selected channel for watching / listening.

Menu option "Details": Opens a dialog window with details about the channel.

View and Edit Details about a Channel

When selecting "Details" from the menu, the Edit Channel window is opened.





Section "General"

Name: You can edit the name of the channel in the "Name" field.

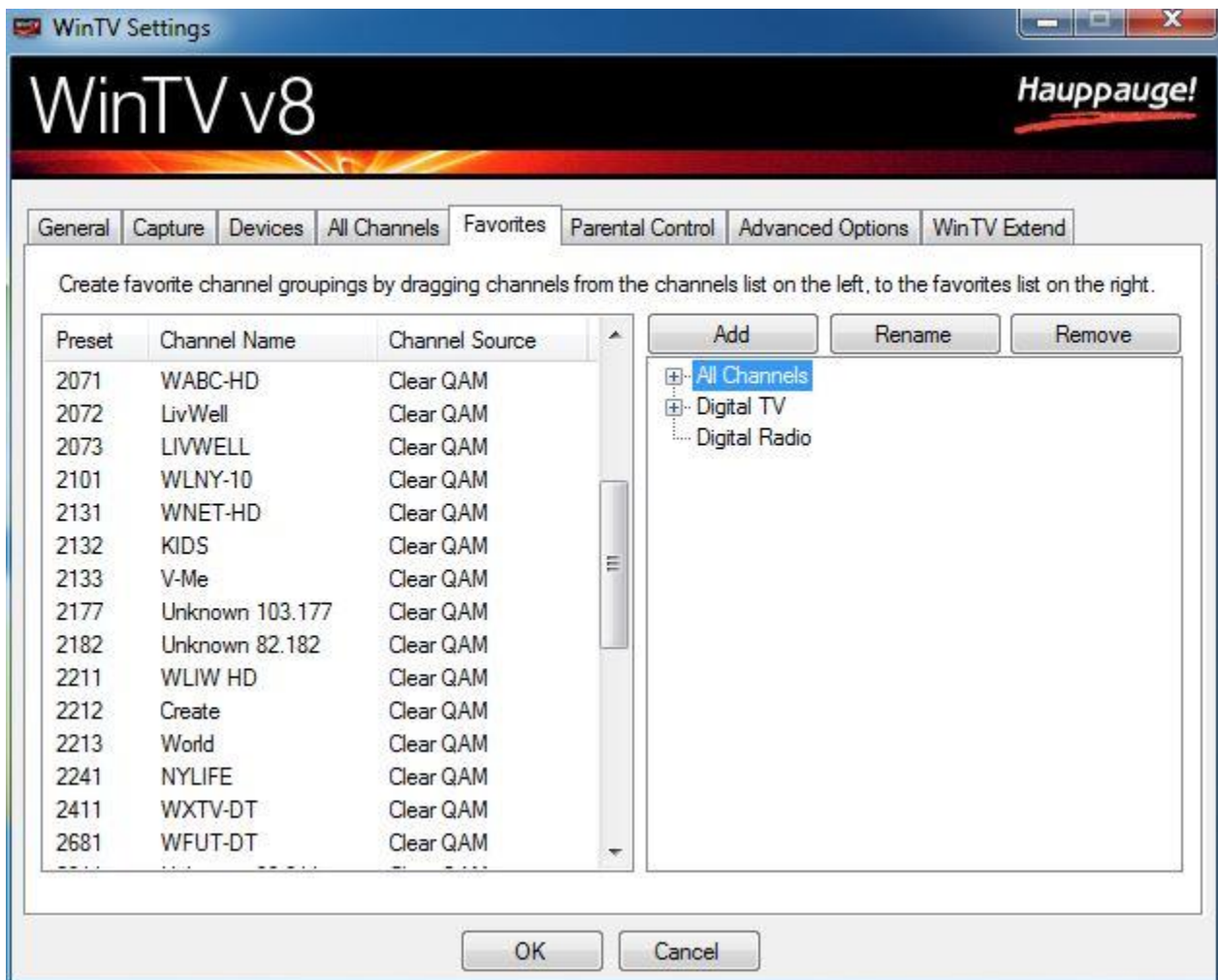
Preset: You can change the position of a channel in the list by changing the number in the "Preset" field. Note: If the new position is in use by another channel already, the other channel is moved to the end of the list.

The other options in this dialog are for the purpose of information only, and cannot be edited.

Moving a Channel up or down

You can move the selected channel up or down using the arrow buttons  . This would change the channel numeric number.

Settings / "Favorites"



Defining Favorites

On the left side all existing channels are listed. The right side shows the pre-defined and user defined channel groups and some buttons.

Add: Creates a new channel group named "New Group", which can then be renamed.

Rename: Used to rename the selected channel group.

Remove: Deletes the user defined channel group or a channel from a group. (This does not actually remove the channel from the database.)

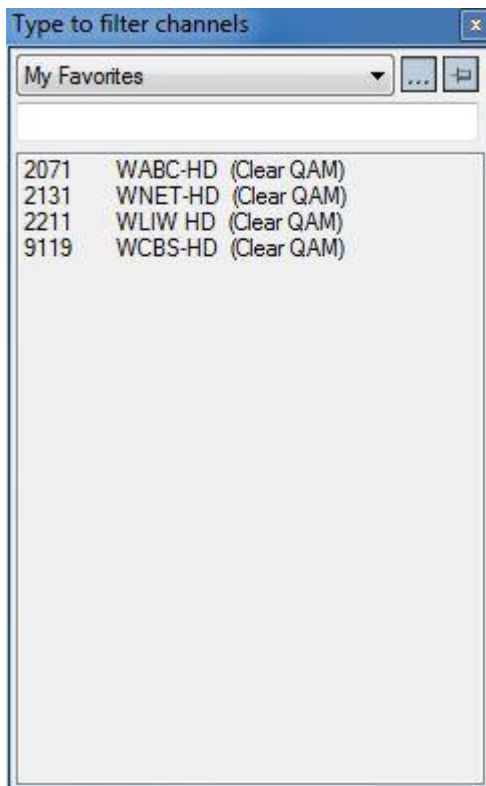
To create a new group with your favorites:

1. Click on **Add**, to create a new group.
2. Rename this group to "My Channels" (for example).
3. Click on a channel in the left list, drag this channel over to your channel group while holding down the mouse button, then release the mouse button. The selected channel is placed in the channel group. Repeat this procedure with all desired channels.

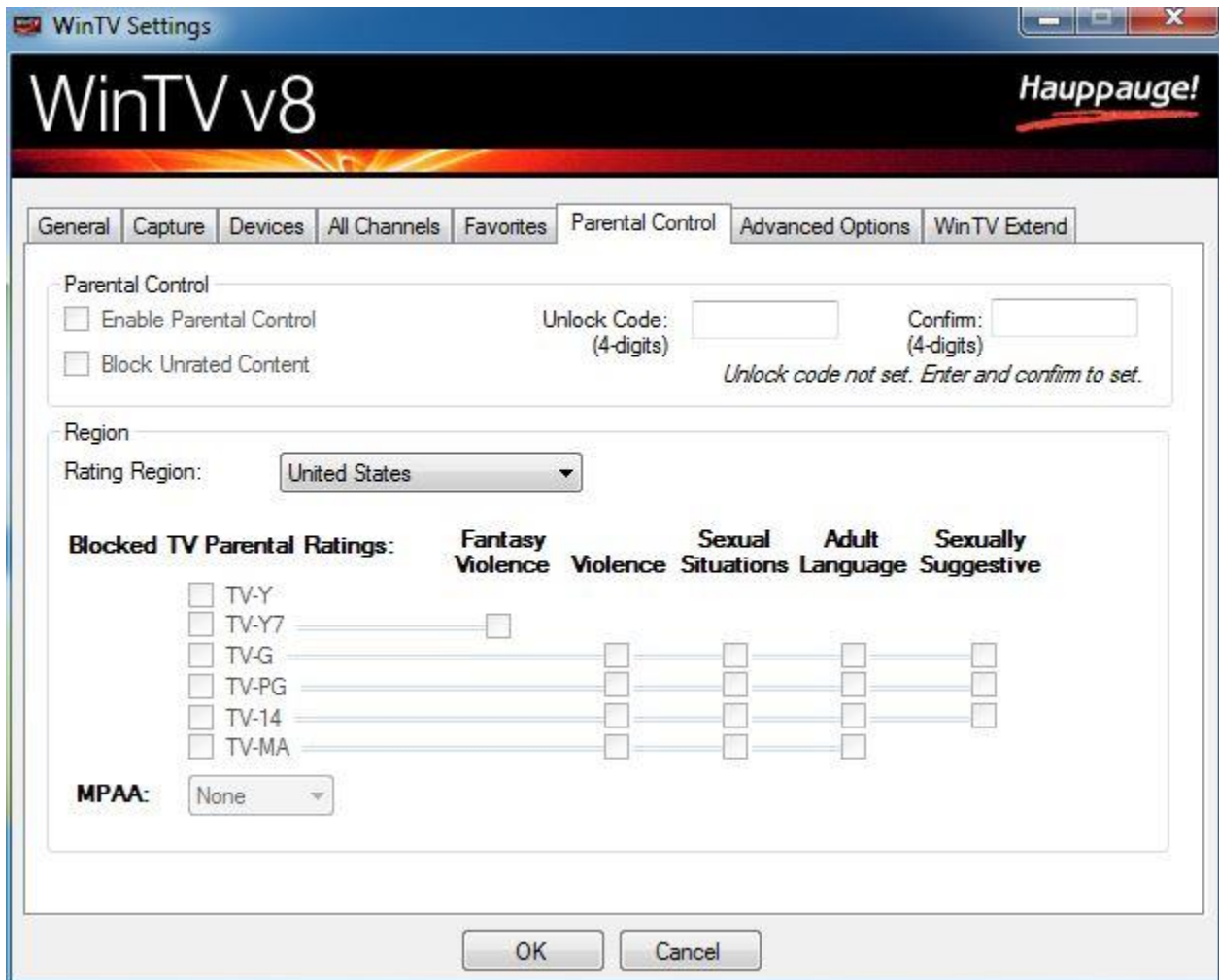
Note: The "Favorites" tab is not designed to sort, rename or delete channels from the database. Use the "All Channels" tab for these tasks.

Using Favorites

After a new group has been defined, it will be shown in the drop down list under the Find Channels menu on the main TV window. When selecting this channel group, only channels from the group will be displayed.



Settings / "Parental Control"



This dialog allows you to enable Parental Control on digital TV programs, and is available on products for North America only.

Section "Parental Control"

Enable Parental Control: Once you have set the 'Unlock Code', you can select this option to enable parental control.

Block Unrated Content: If this option is enabled, unrated TV content will not be displayed.

Unlock Code: The Unlock Code is a password chosen by yourself. Enter the password into the 'Unlock Code' field and retype the same password in the 'Confirm' field. After the Unlock Code has been set, the Parental Control option can be enabled. If you want to disable parental control, or change settings later, you will have to enter the Unlock Code again.

Section "Region"

Rating Region: Specifies the rating region.

Blocked TV Parental Ratings: Select the parental rating (and eventually sub-rating) for which TV content is to be **blocked**.

TV-Y: For all children, including very young children.

TV-Y7: For children age 7 and above.

TV-G: General audience; suitable for all children.

TV-PG: Parental Guidance; suggests parents to watch with their children.

TV-14: Unsuitable for children under age 14.

TV-MA: Mature Audience only.

MPAA: Specifies the film rating according to the **Motion Picture Association of America**.

G: General Audience. All ages admitted.

PG: Parental Guidance Suggested. Some material may not be suitable for children.

PG-13: Parents Strongly Cautioned. Some material may be inappropriate for children under 13.

R: Restricted. Under 17 requires accompanying parent or adult guardian.

NC-17: No one of age 17 and under admitted.

X: Same as NC-17.

Settings / "Advanced Options"



Section "TV"

Automatically start Live TV: If enabled (default), on startup of the WinTV application, live TV is started automatically.

Disable Now/Next: If this option is checked, the Now/Next electronic program guide information is not shown when changing channels.

Disable OSD Graphics: If this option is checked, the On Screen Display annunciators are not displayed (for example "Mute" or the channel number).

Cycle window mode on double click: If enabled (default), on double click inside the TV image the application view mode cycles through "Normal", "No Title" and "Full Screen". If not enabled, a double click switches between the current view and "Full Screen", where the current view may be "Normal" or "No Title". (You can also change the application view in the WinTV menu).

Prefer AC3 audio: If enabled (default), AC3 audio is preferred over MPEG audio, if a channel offers MPEG audio and AC3 audio.

Block Windows Screen Saver: If enabled (default), it will stop screen saver from running while WinTV is active.

Auto Convert MPEG-2 .ts recordings to .mpg: In general all recordings are made in the Transport Stream (TS) format (file extension .ts). If this option is enabled, the transport stream file is converted into the Program Stream (PS) format (file extension .mpg), after the recording is completed. This only applies to TV channels using the MPEG-2 video encoding. Recordings from TV channels broadcast according to the H.264 standard (usually HD quality) and also DVB radio recordings are **not** converted into the program stream format. The differences between PS format and TS format are file size and the type of information that can be included in the stream. TS files are bigger than PS files, but can also contain subtitles, teletext data or several audio streams. PS files are smaller, but only contain one video stream and one audio stream.

Delete original file after conversion: If enabled, the original TS file (.ts) is deleted after conversion into the PS file (.mpg).

Remember Window Mode: If enabled WinTV will remember the window mode (Title, No title, Full screen) when closing and will open in that mode the next time it is run.

Use Game Mode for analog: In normal mode the TV / video displayed in WinTV is delayed for a few seconds, because it is buffered on hard drive or in memory. In Game Mode the analog TV / Video is displayed without delay. You should enable Game Mode if you intend to connect a game console to the video input of WinTV. In Game Mode these functions are disabled: Pausing TV (TimeShift) (You can still record and make snapshots in Game Mode.) After changing the Game Mode setting, you need to reboot Windows. If you have a slower PC game mode can help smooth out analog video if the CPU is running at near maximum. Please note: The Game Mode option is available on certain WinTV products only.

Disable Game Mode recording: On systems with low CPU performance (some netbooks for example) it is recommended to check this option, if you do not intend to record live TV / video. This will reduce CPU load when displaying live TV / video. In this mode the following functions are disabled: Pausing TV (TimeShift), recording and teletext.

Enable Picture-In-Picture: This will enable the "Picture in Picture" feature on dual encoder tuner boards (i.e. HVR-2250).

Section "Logs"

Log files are used for troubleshooting.

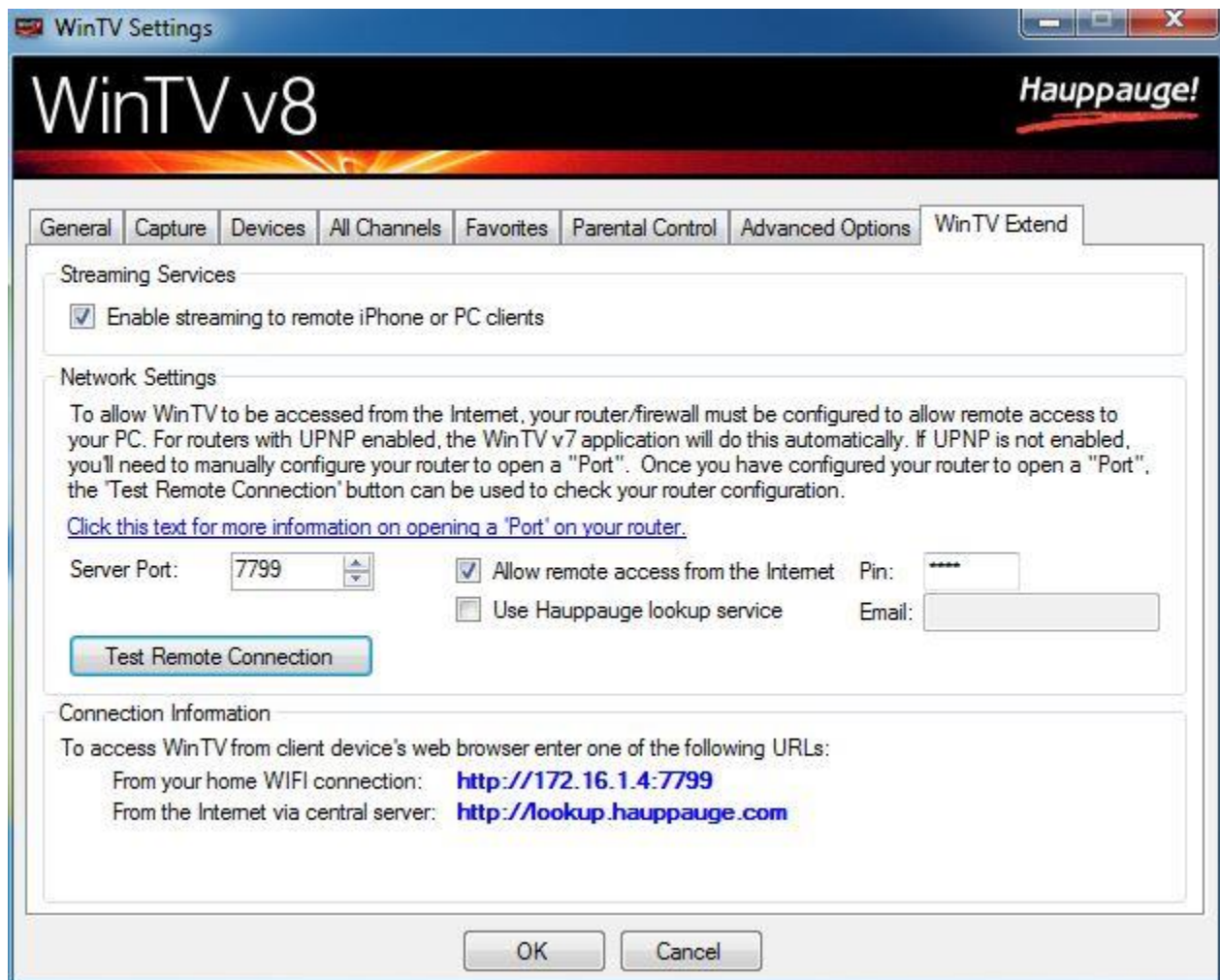
Open Logs Directory: Opens the 'Logs' folder in Windows Explorer, where all log files generated by WinTV are located.

Enable extended logging (requires reboot): If enabled, extended information from the HauppaugeTVServer and Capture Modules is logged. Changes take effect after the system is rebooted.

Section "Decoders"

Enable 3rd Party Decoders: This option allows to use 3rd Party Decoders in addition to, or as a replacement for the decoders that are installed by the WinTV software. Unsupported feature, only make changes for troubleshooting purposes.

Settings / "WinTV Extend"



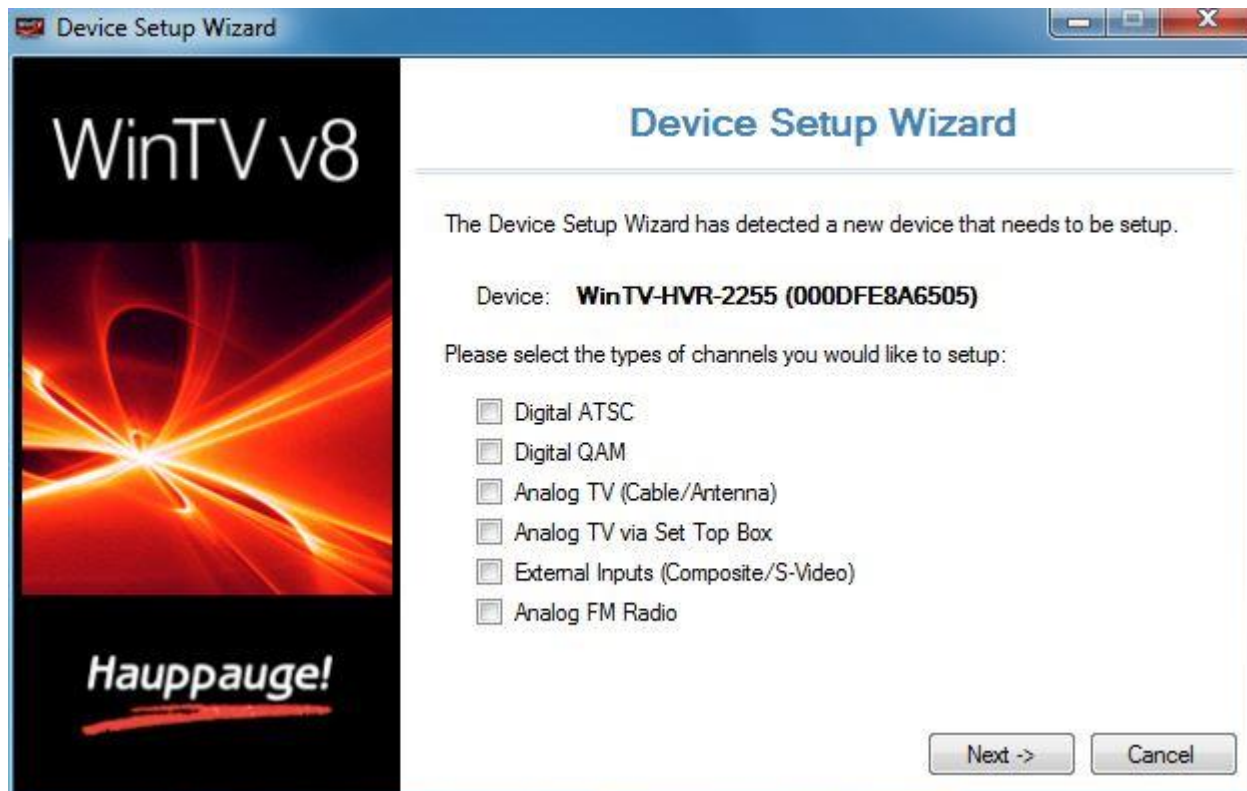
WinTV Extend

WinTV Extend is an optional purchase which lets you stream your Channel lineup to another computer, your mobile phone and handheld devices.

Please refer to the Quick Installation Guide for setup instructions at this link: [Extend QI](#) (PDF format)

Device Setup Wizard

The Device Setup Wizard will launch the first time you open WinTV 8.



The available options are dependent on the WinTV product.

Digital ATSC - Digital terrestrial TV using an antenna (North America only)

Digital QAM - Digital cable TV (Clear QAM, North America only)

Analog TV (Antenna/Cable) - Analog TV over antenna or cable

Analog TV via Set Top Box - Analog TV using a cable or satellite box

External Inputs (Composite/S-Video) - For configuration of the analog video inputs

Analog FM Radio - Analog FM radio

You can select one or multiple selections if your product is capable of multiple inputs.

If you have a HD PVR 2 or Colossus device, please go to **HD Capture Devices**.

If you need to re-run the Device Setup Wizard please go to the **Devices** menu in WinTV Settings.

Scanning for ATSC Channels (Digital over-the-air TV, North America)

This section refers to WinTV models with an ATSC tuner or hybrid NTSC/ATSC tuner.

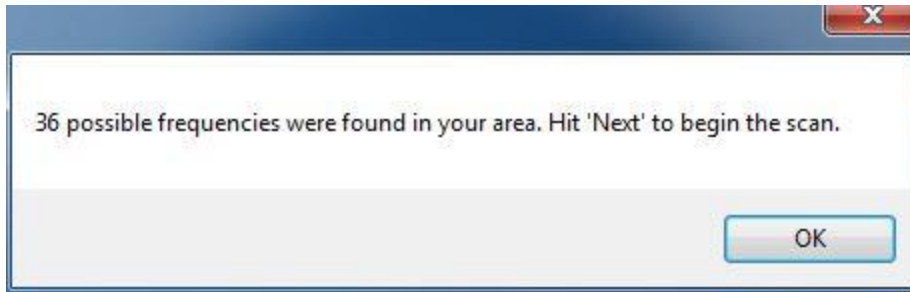
Before scanning, you should make sure that your terrestrial antenna is connected to the TV tuner.



If you know the range of possible ATSC channels in your area, you can reduce the scanning time by editing the fields "Scan Start Channel" and "Scan End Channel".

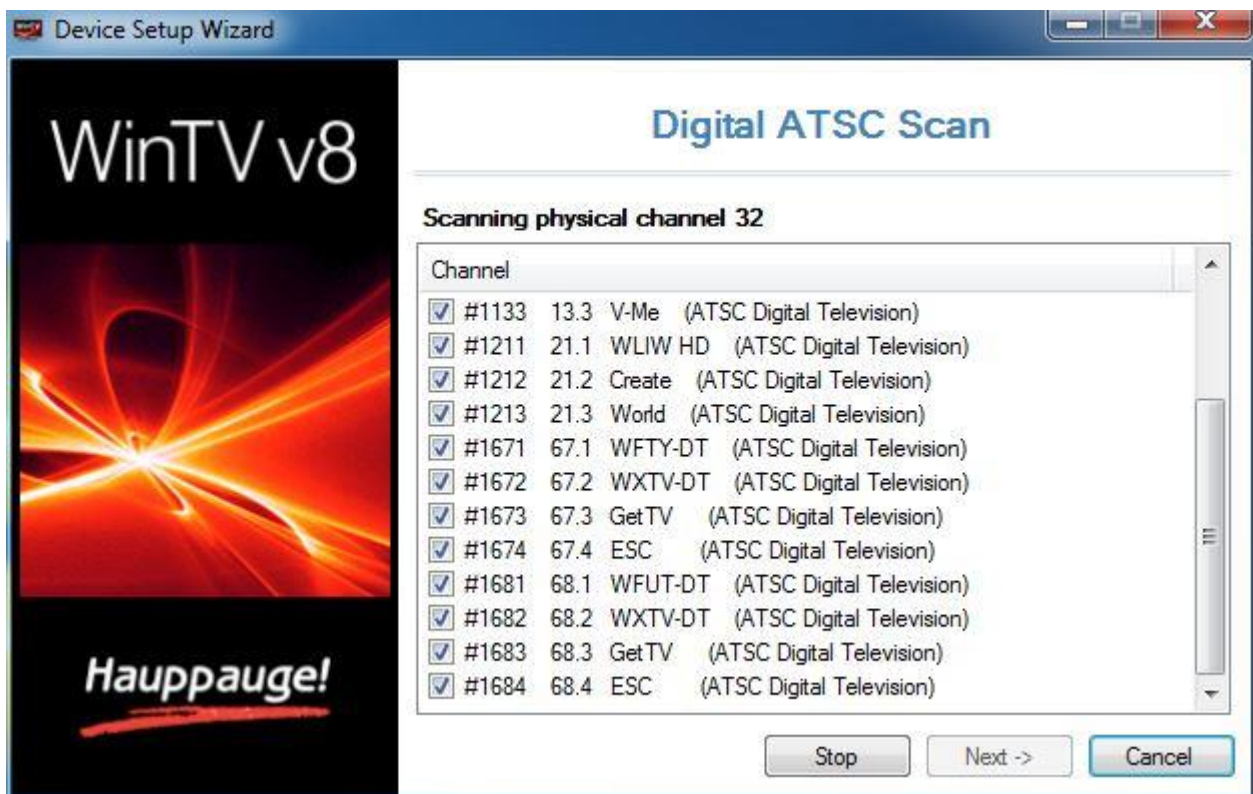
Optionally, you can enter a Zip Code and click the button "Internet Assisted Scan". This will retrieve a list of channels from the Internet.

You will see a message like this:



Note: Internet Assisted Scan is only available in the United States and is not available for Canada.

Click **Next** to start the channel search.



As TV channels are found, they will appear in the Channel box. When complete, click **Next** to save the channels to the database.

In case not all channels are found, you can try the following and rescan for channels:

- If you are using an indoor antenna, position it near to a window.
- Use an antenna signal booster.

Scanning for Clear QAM Digital Cable TV Channels (North America)

This section refers to WinTV models with a digital cable (QAM) tuner.

Before scanning, you should make sure that your digital cable TV feed is connected to the TV tuner.

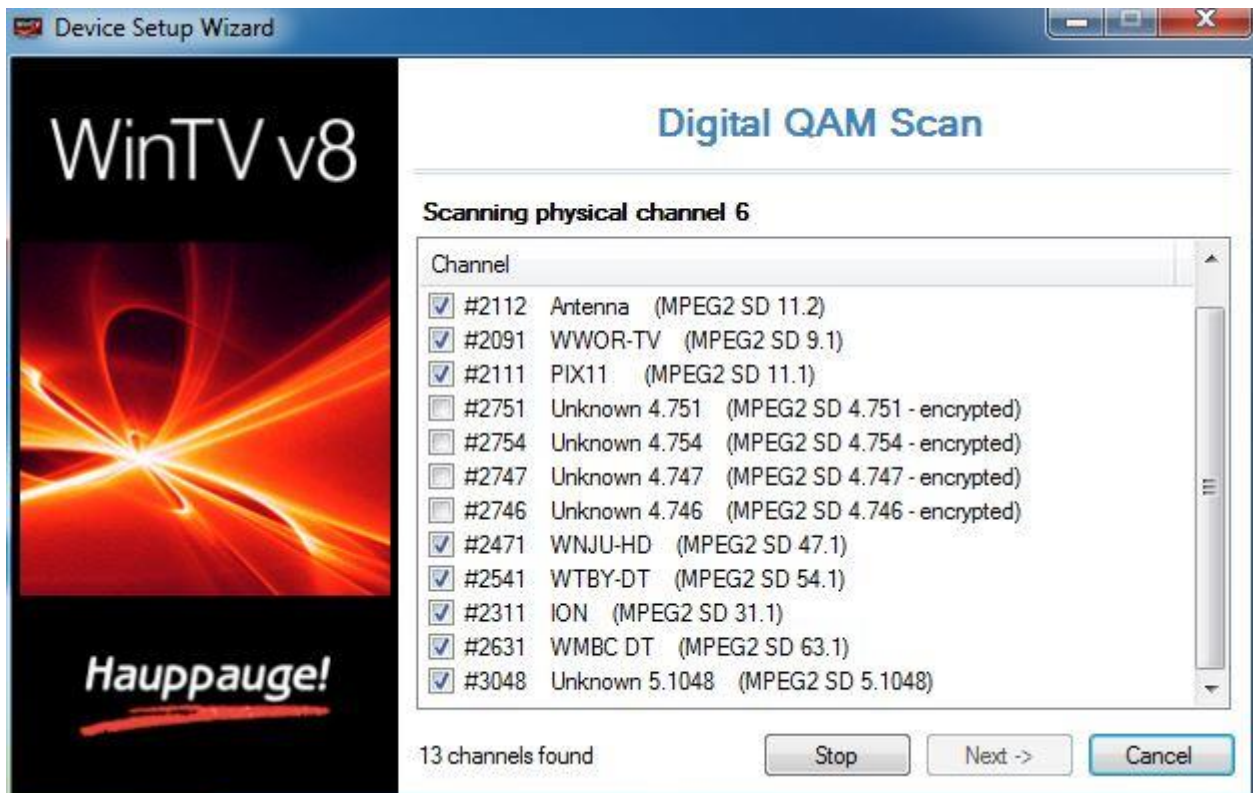
Clear QAM digital cable TV channels are those TV channels broadcast on a digital cable network which are unencrypted ('free to view').



For most cable TV providers the "Frequencies" option should be set to "Default Cable Frequencies" (as is by default).

If you know the range of possible QAM channels at your location, you can reduce the scanning time by editing the fields "Scan Start Channel" and "Scan End Channel".

Click **Next** to start the channel search.



As TV channels are found, they will appear in the Channel box. QAM channels which are detected but are encrypted are automatically not selected.

When complete, click **Next** to save the channels to the database.

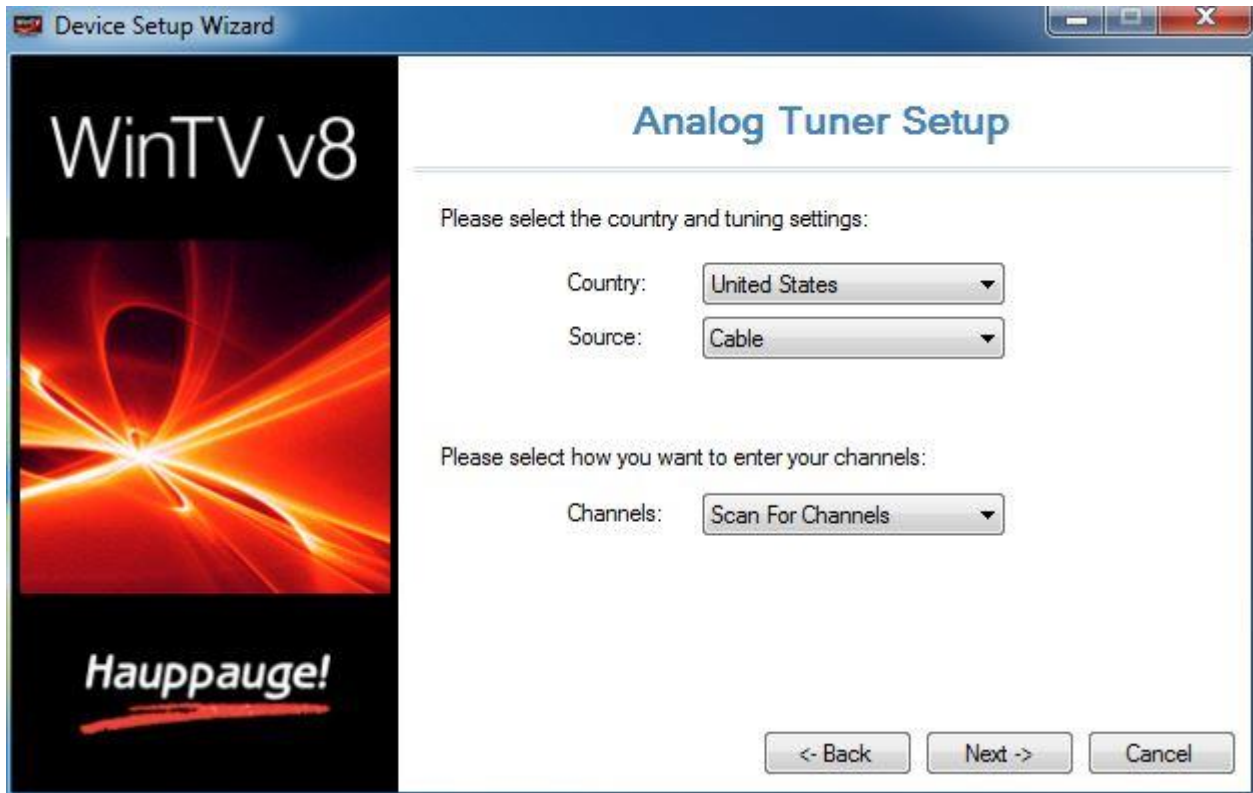
In case not all channels are found, you can try the following:

- From the "Frequencies" drop down list select "HRC Cable Frequencies" and rescan for channels.

Channel Scan for Analog TV (Cable or Antenna)

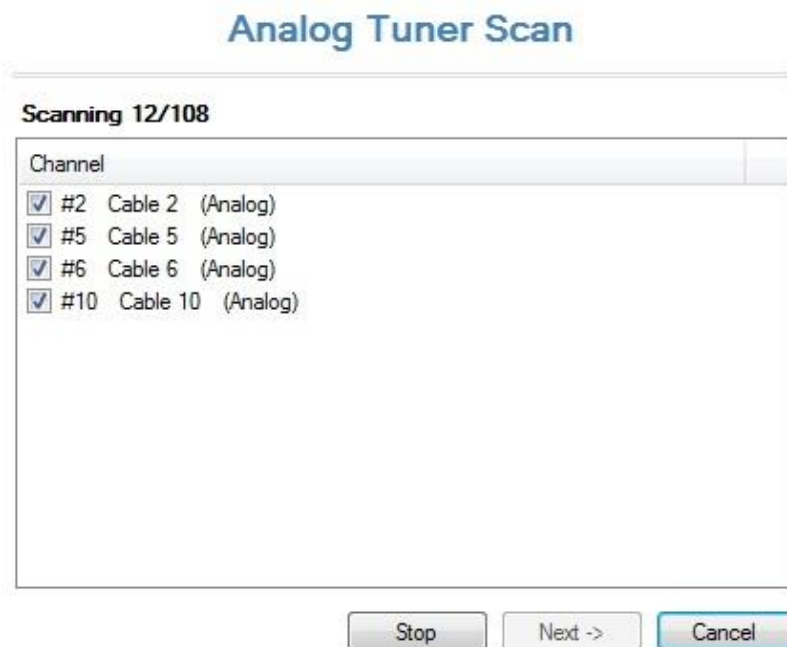
This section refers to products with a TV tuner for analog TV.

Before scanning you should make sure that the cable TV or the antenna is connected to the TV tuner.



Select your country and the signal source: **Antenna**, if an antenna is connected, or **Cable** if a cable TV feed is connected.

Click **Next** to start the channel search.

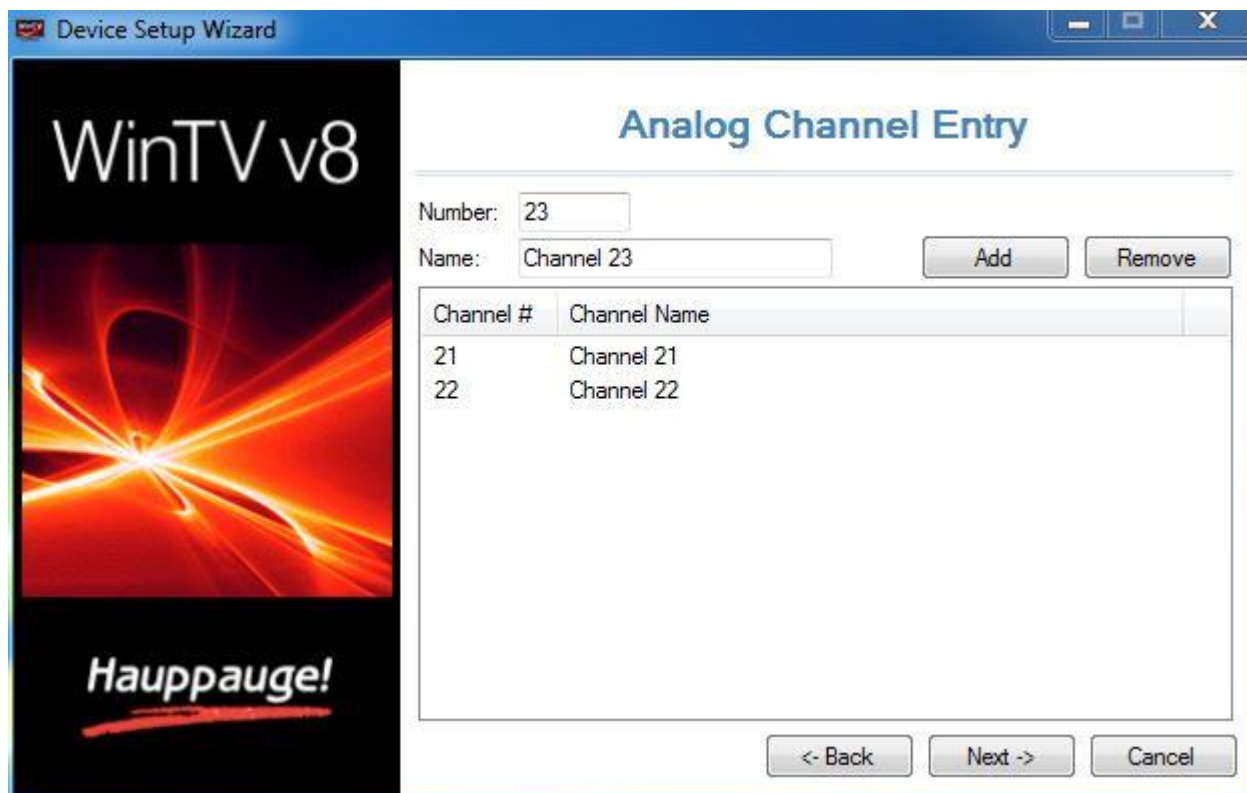


As TV channels are found, they will appear in the Channel box. When finished, click **Next** to save the channels to the database.

Adding Channels Manually

You can shorten the channel scan if you know the channel numbers for your local station.

Do not select "Scan For Channels", but "Manual Entry" instead from the drop down menu and click **Next**.



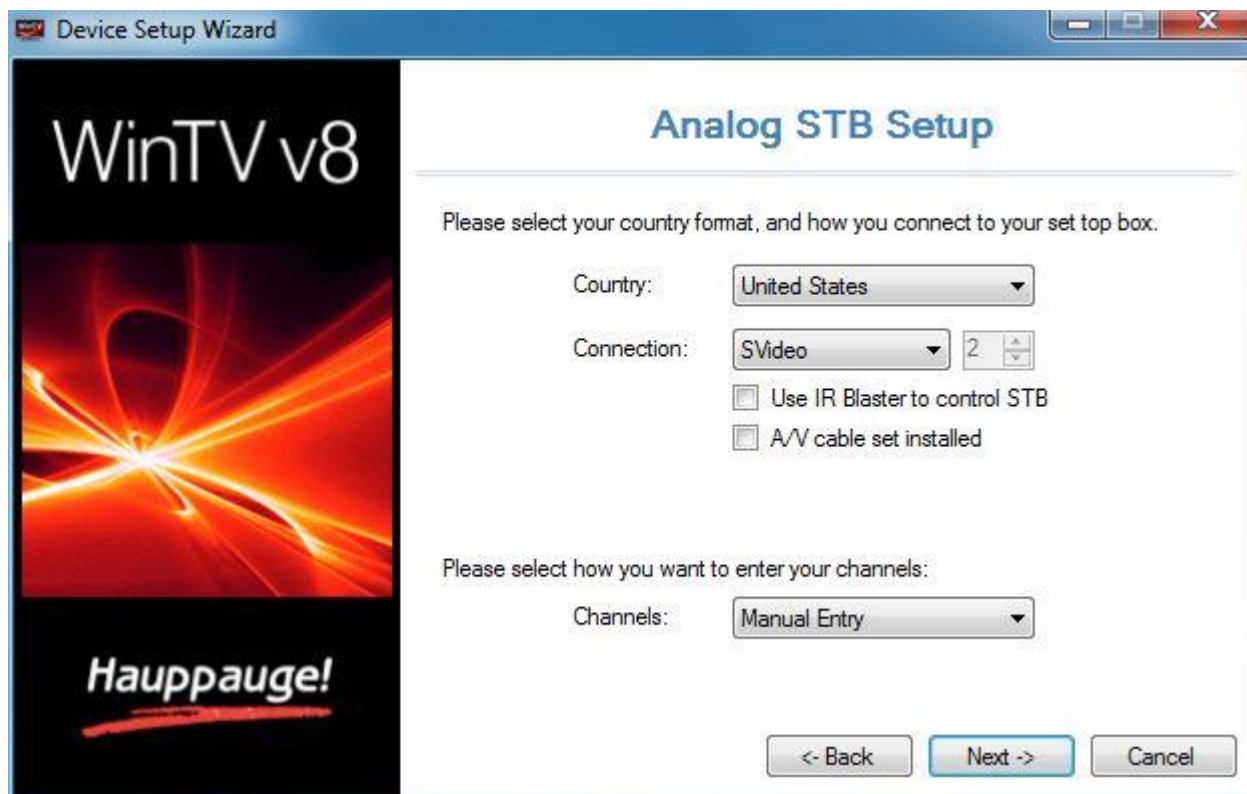
Enter the channel number into the field "Number", and a channel name into the field "Name". Then click on **Add**. The channel is added to the list. You can repeat this procedure with other channels.

When done, click **Next** to save the channels to the database.

Channel Search for Analog TV via Set Top Box

This section refers to WinTV models with Set Top Box IR blaster support.

Before scanning you should make sure that your Set Top Box is connected to TV Tuner or A/V connector of your WinTV product.



Country: Select your country.

Connection: Select the Set Top Box connection.

If you select Tuner, you must select the incoming channel. Most common channels used are 3 or 4.

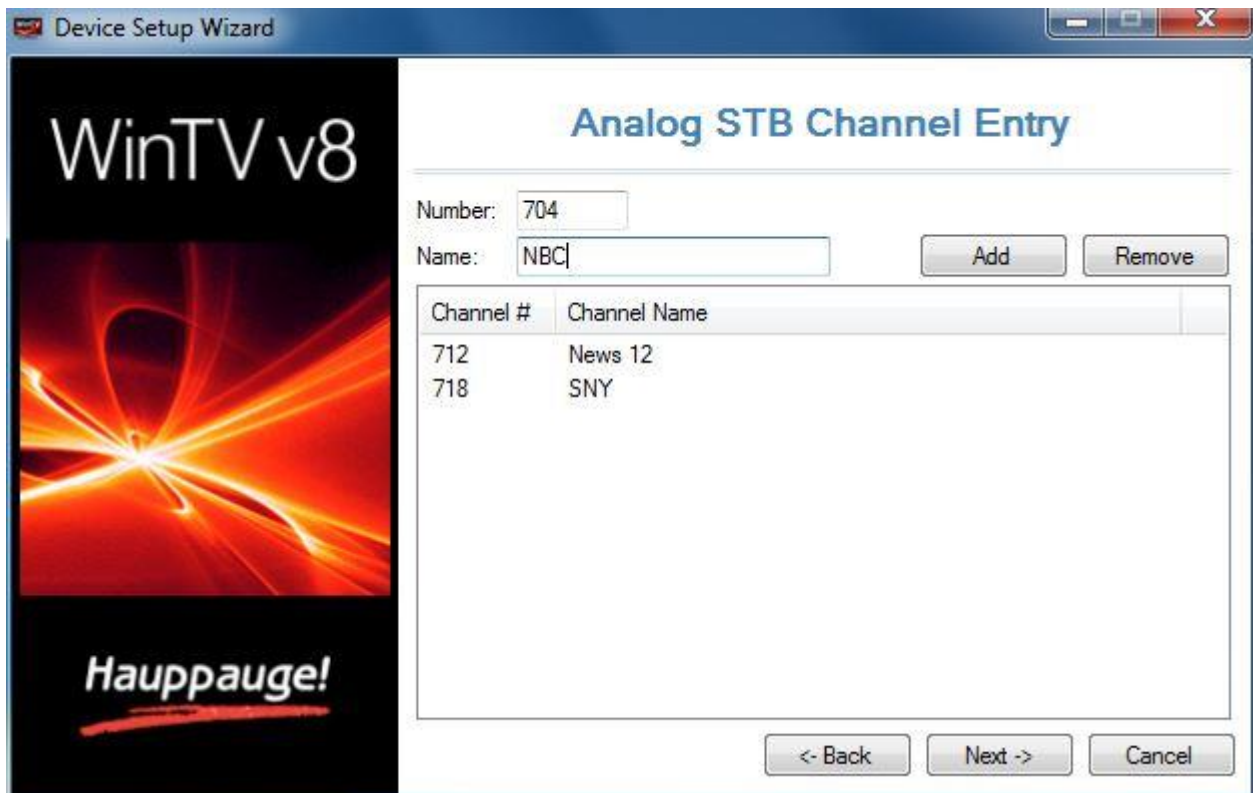
Use IR Blaster to control STB: Check this if you wish to use the supplied IR Blaster.

A/V cable set installed: Only available with internal products that have an auxiliary internal A/V connector.

Channels: Select between 'Manual Entry', 'Internet Lookup (USA only)', or 'Create Channel Range'.

Click **Next**.

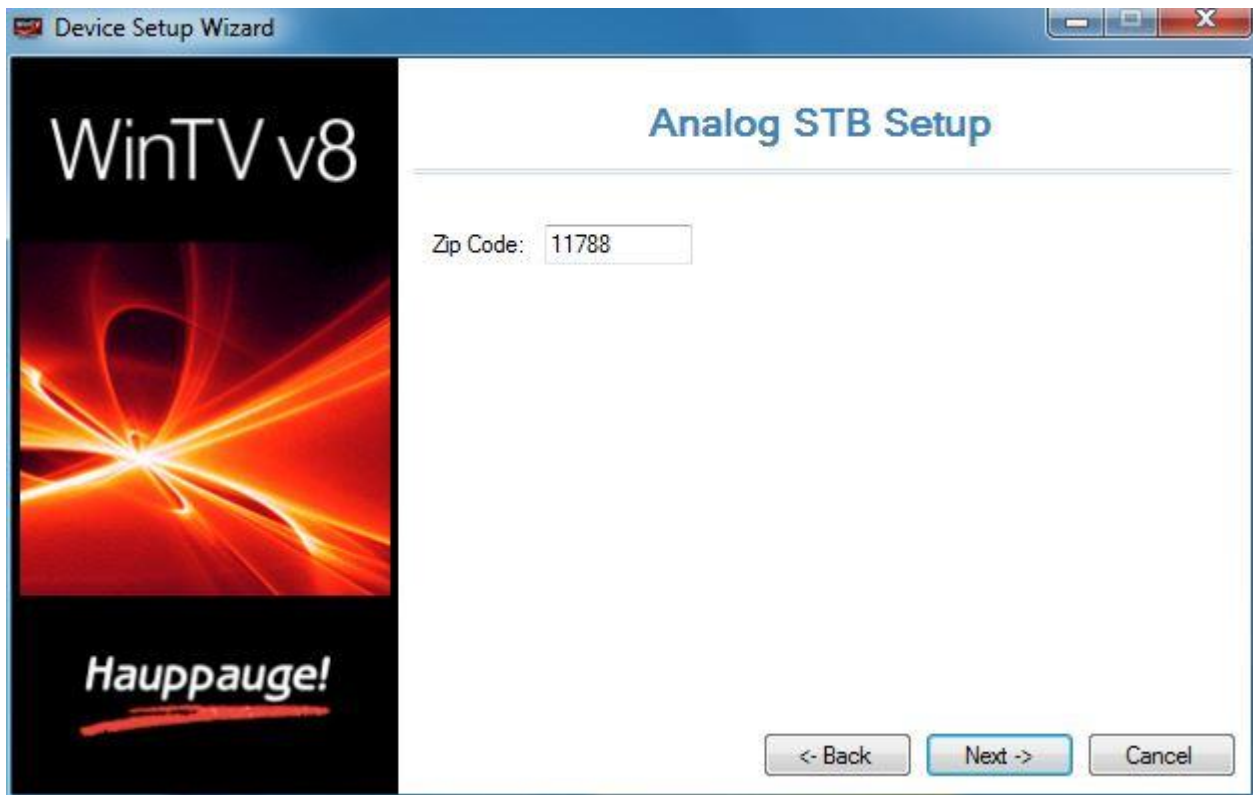
Manual Entry



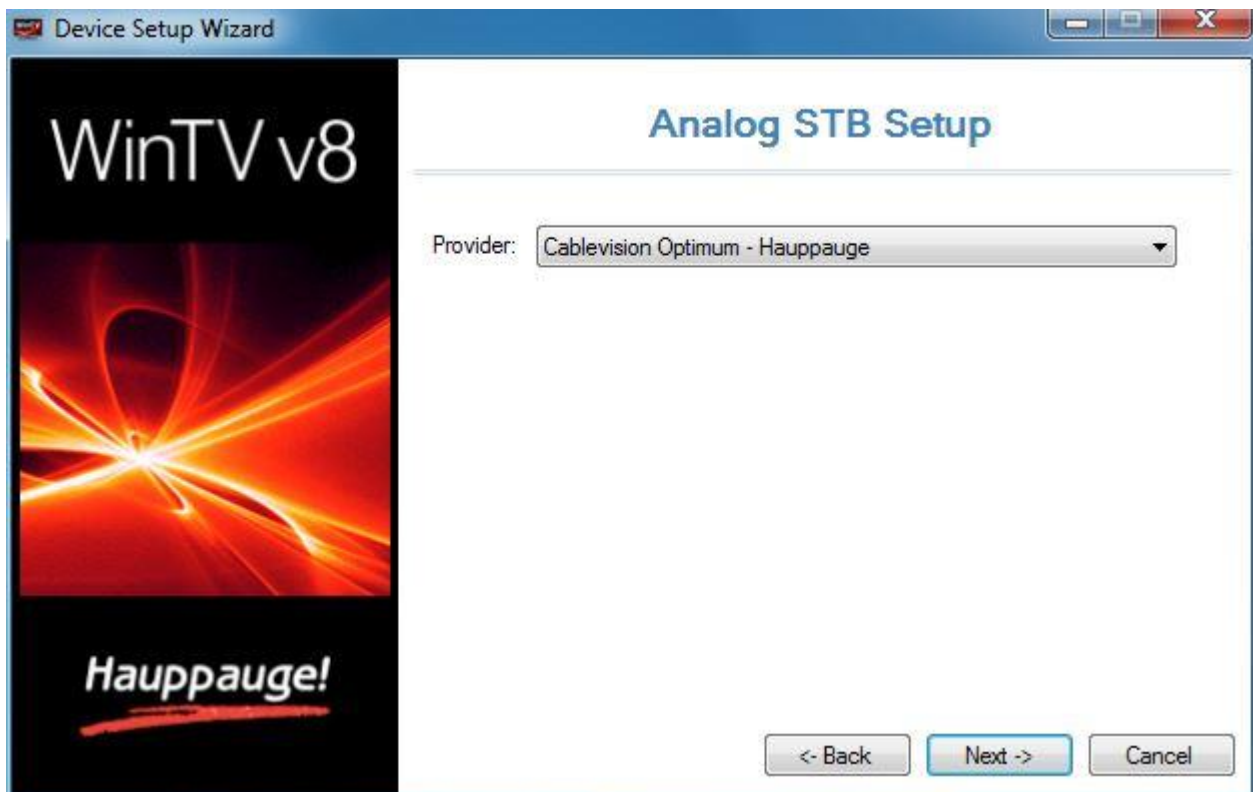
If you know the specific channels you want to add, add them manually. Type the number and name and click add. Click **Next** to save the channels to the database.

Internet Lookup

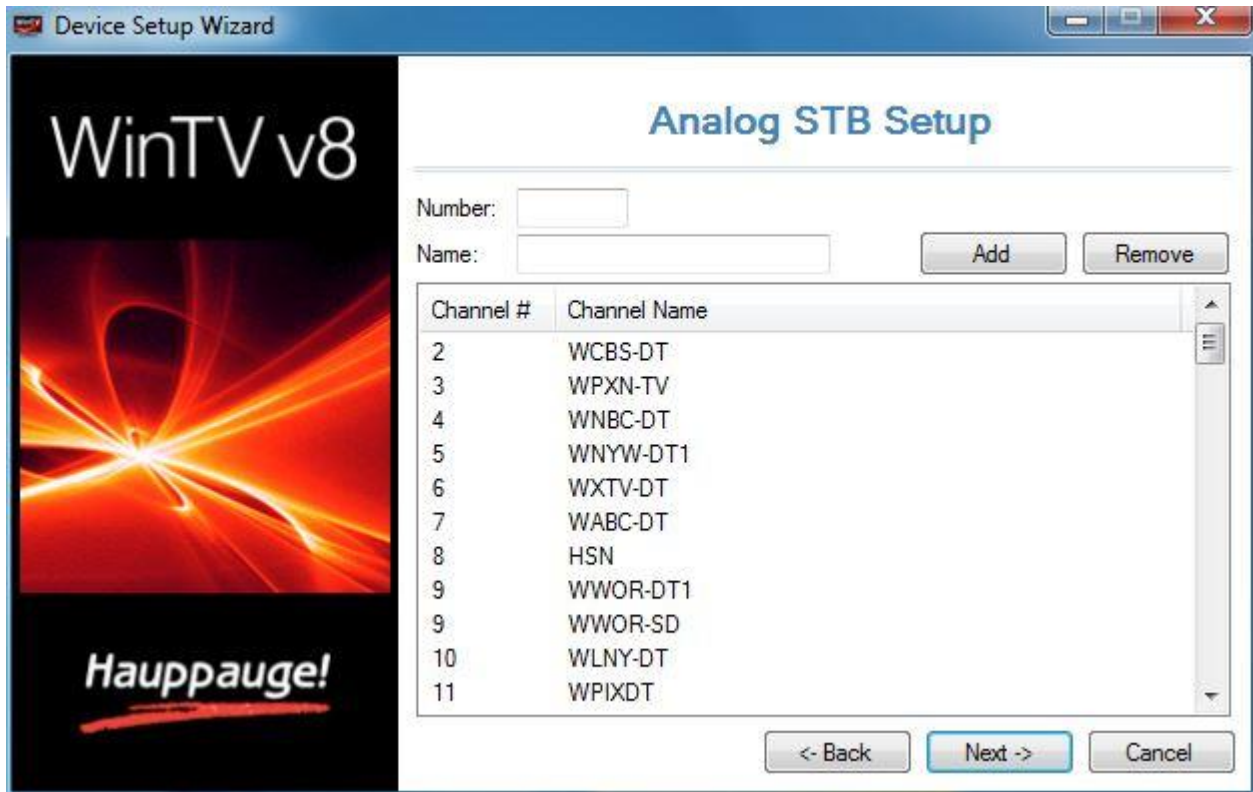
USA only feature. Type your Zip Code and click **Next**.



Select the provider from the list available and click **Next**.



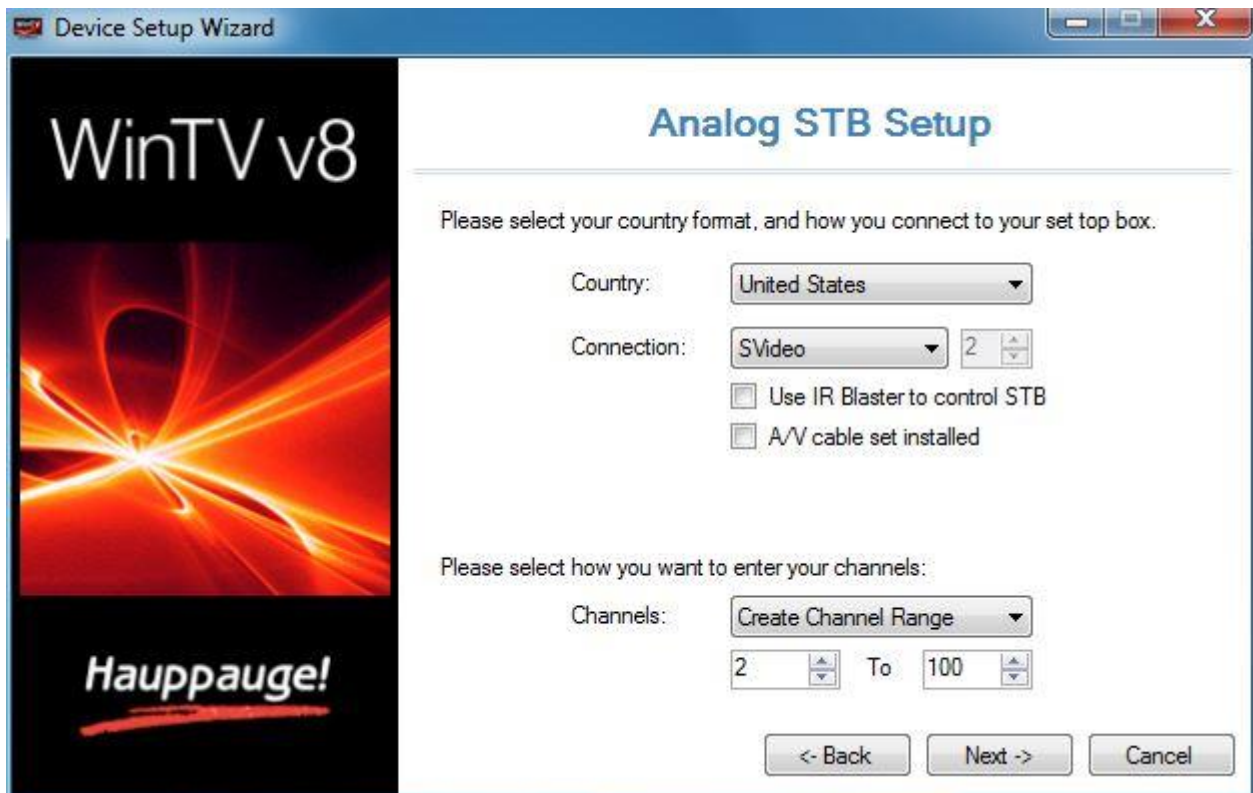
There might be multiple listings for your provider. Check that the list of channels is the correct one.



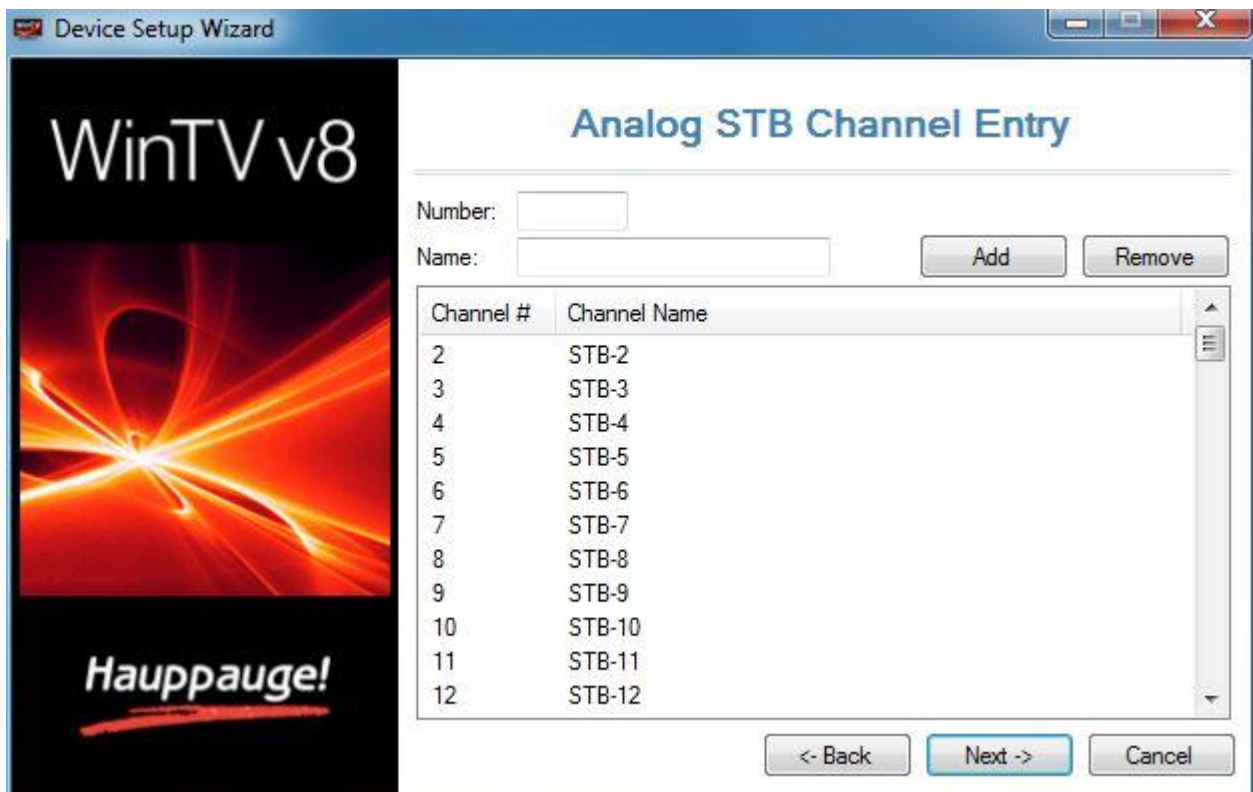
If the list is incorrect click **Back** and select the next listing available. If correct click **Next** to save the channels to the database.

Create Channel Range

Useful when not in the USA. You can add a range of channels to match with your Set Top Box.



In this example channels 2-100 will be added. Click **Next**.



Channels will be added automatically, click **Next** to save the channels to the database.

Configuring External Video Inputs

This section refers to WinTV products with external video inputs for analog video.

When connecting external video sources to the WinTV product, you must use the correct cables that send the signal from the video device to the WinTV product, and in addition you must configure the WinTV software for use with the video devices.

Connecting a Video Recorder (VCR), DVD Player, or Video Game System

Using Composite Video

Connect the yellow RCA "Video Out" jack from your device to the Composite Video input on the WinTV product.

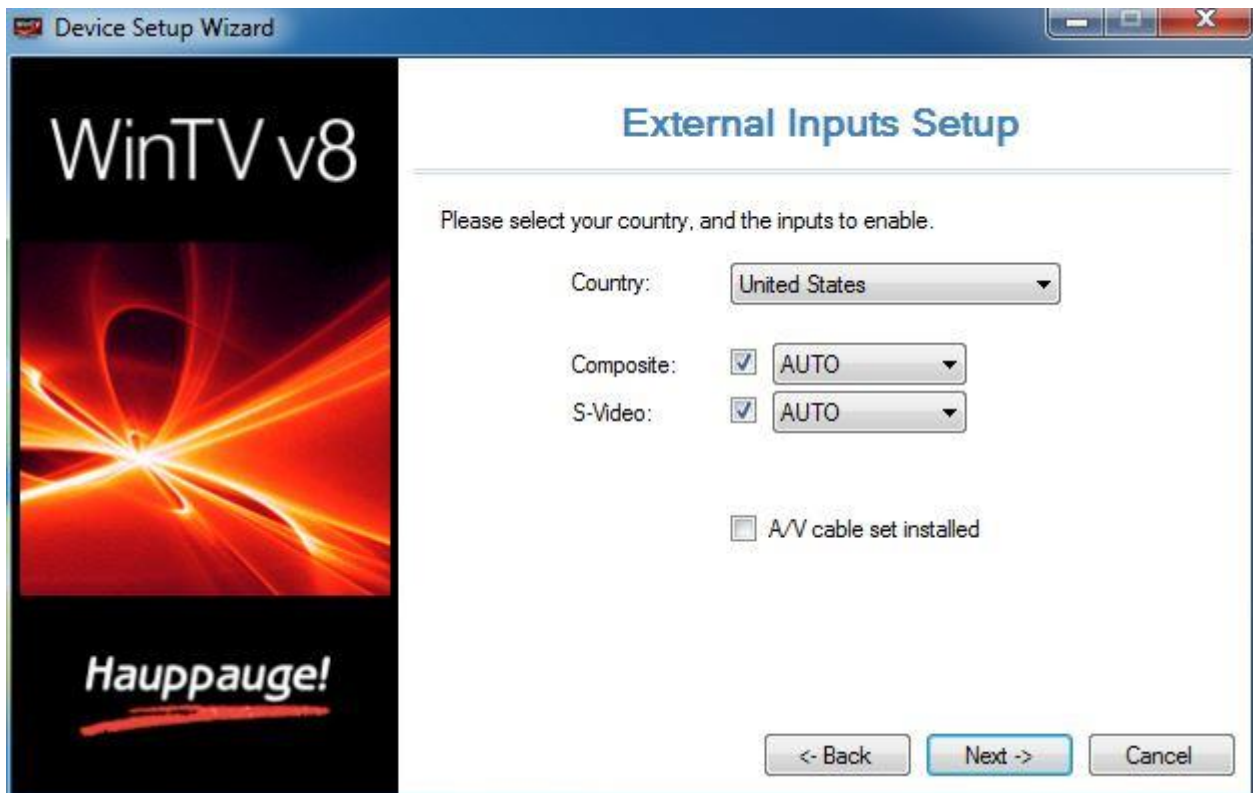
Using S-Video

Connect the black four-pin mini-DIN connector "Video Out" jack from your device to the S-Video input on the WinTV product.

Audio Connection

Be aware that the yellow RCA composite and S-Video connectors do not carry audio. You will also need to connect the red & white (left and right) RCA audio output to the audio input connector on the WinTV. Depending on your WinTV model you may need to use an adapter to convert the red & white RCA connectors to a 3.5 mm stereo mini jack connection.

Configuring the Video Inputs in Software

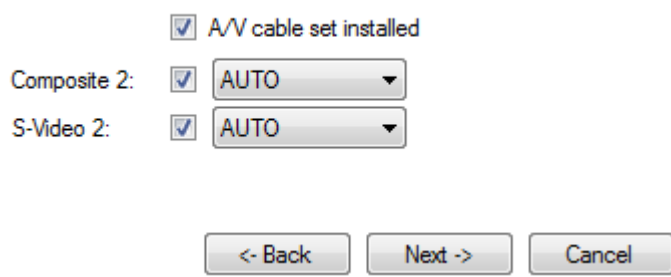


Country: Select the country.

Composite: Leave it checked if you are using Composite. **AUTO** Selects the appropriate type of signal format for current region.

S-Video: Leave it checked if you are using S-Video. **AUTO** Selects the appropriate type of signal format for current region.

A/V Cable Set Installed: If checked you can add a secondary video source to an internal auxiliary A/V adapter if available and installed.



Click **Next** to finish the configuration. This adds the selected video inputs as "Composite" or "S-Video" channels to the channel list.

A second set of "Composite 2" or "S-Video 2" will be added if A/V Cable Set Installed is used.

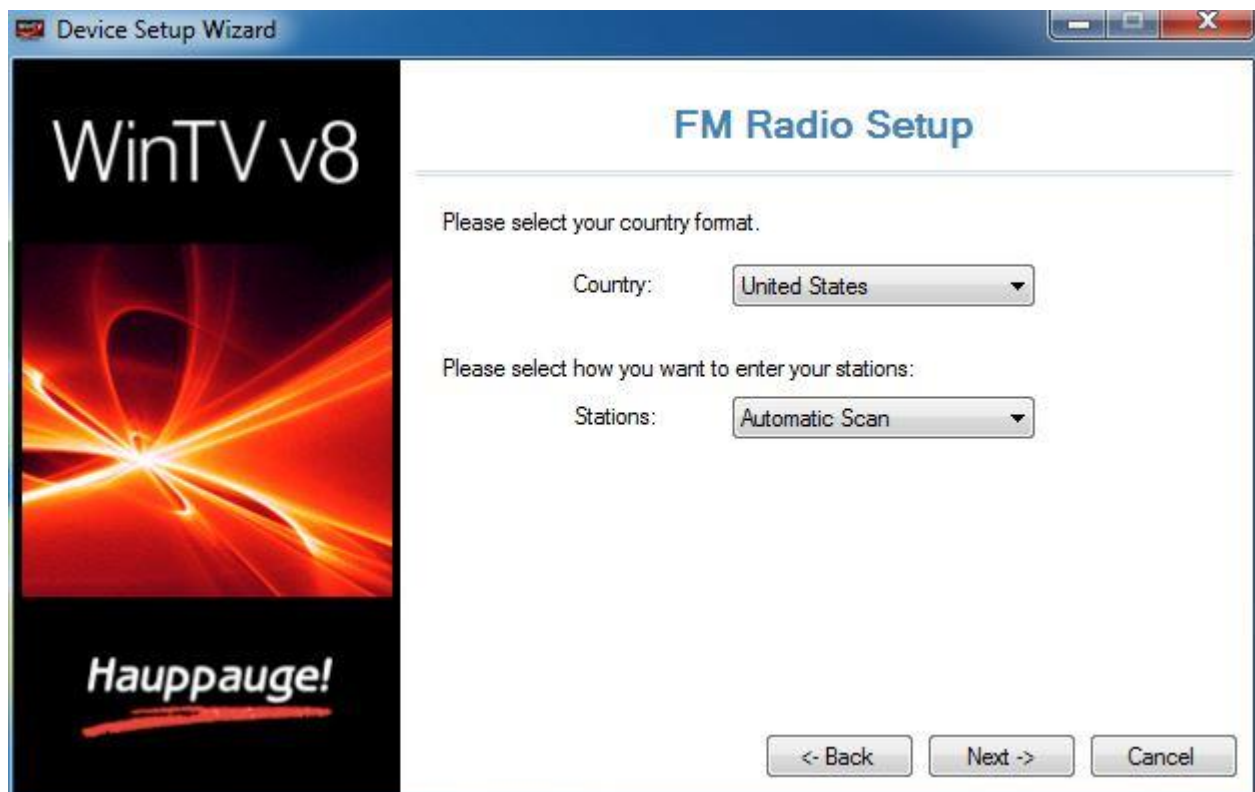
Selecting the Video Channel in the Channel List

To view the signal from your video source in the main WinTV window, select the corresponding "Composite" or "S-Video" entry from the channel list.

Channel Search for FM Radio Stations

This section refers to WinTV models with FM radio tuner.

Before scanning you should make sure that your FM radio antenna is connected to the 'FM' connector of your WinTV product.

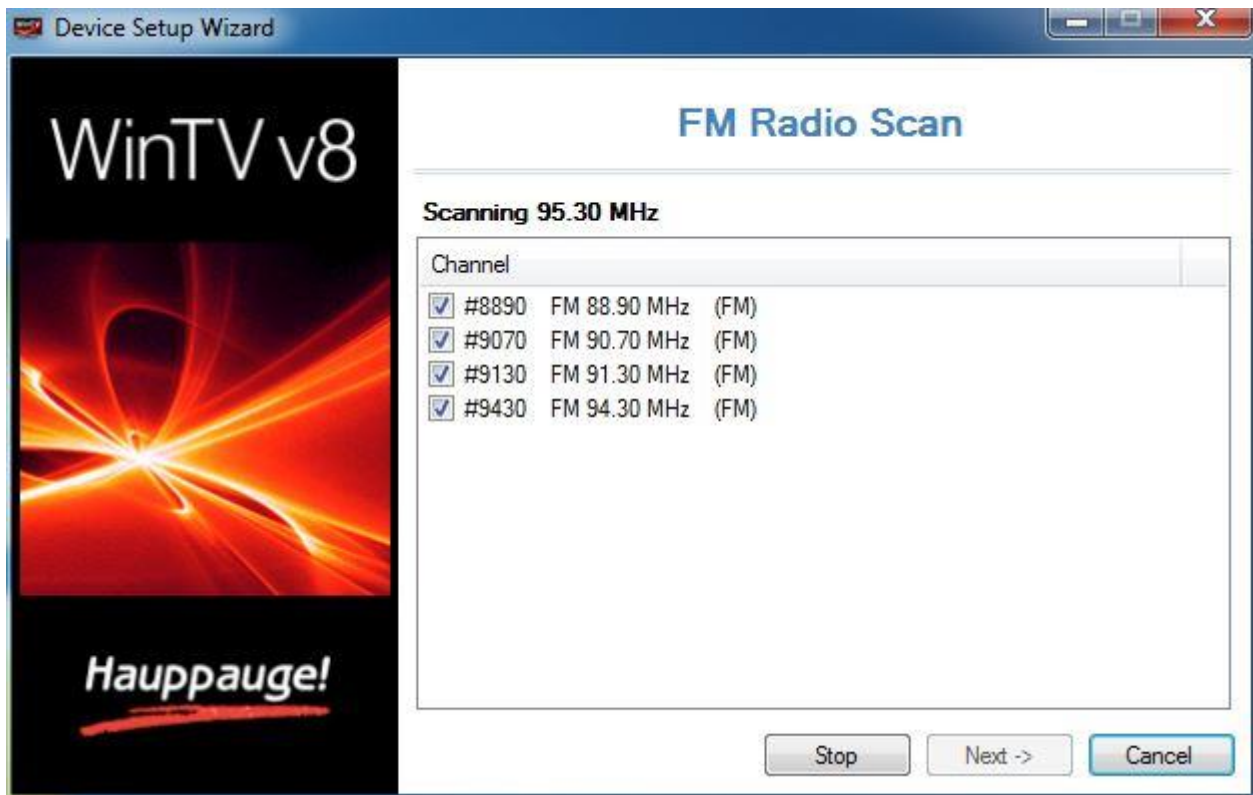


Country: Select your country.

Stations: Select between 'Automatic Scan' or 'Manual Entry'.

Click **Next**.

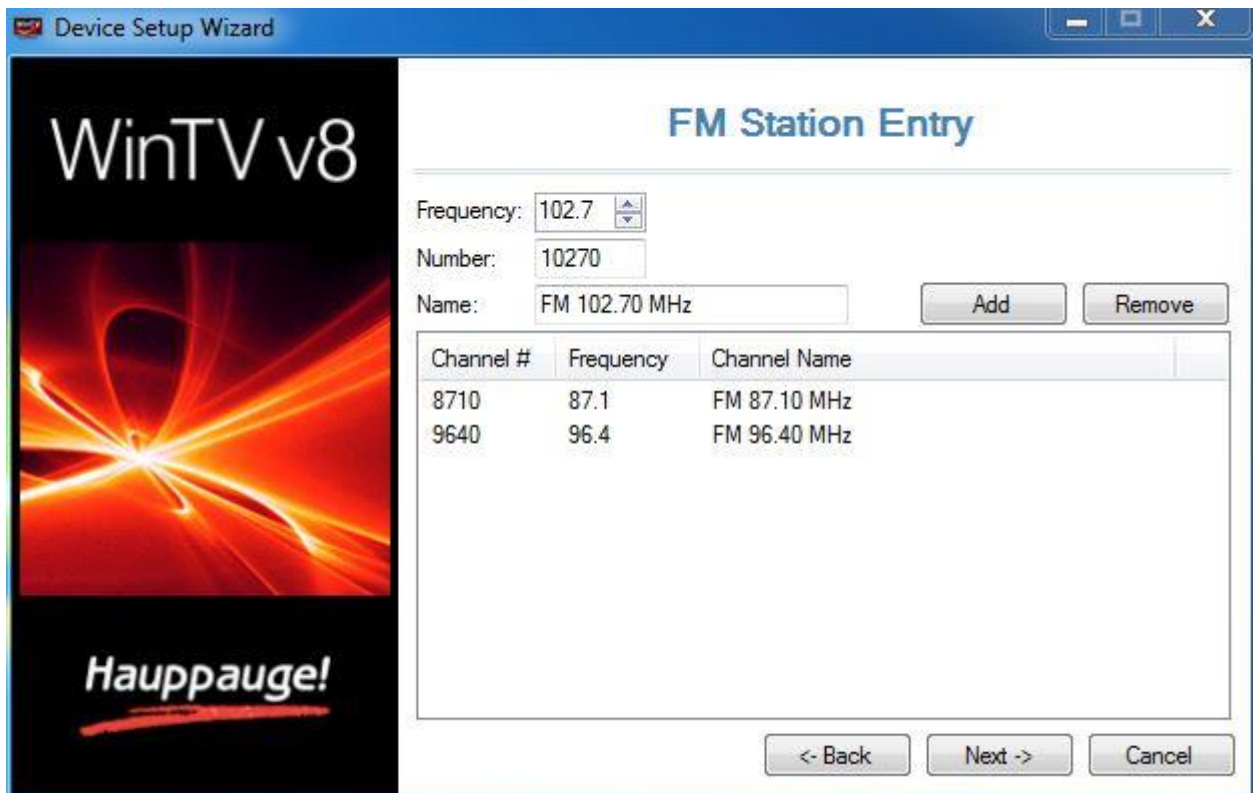
Automatic Scan



As FM radio channels are found, they will appear in the Channel box. When complete, click **Next** to save the channels to the database.

Manual Entry

If you know the local FM radio frequencies, you can also enter them manually.



Enter the frequency into the field "Frequency". Alternative you can increase / decrease the frequency in 0.1 MHz steps using the arrows. You can also enter a name into the field "Name". Click on **Add** to add the station.

You can repeat this procedure with further frequencies.

When finished, click **Next** to save the channels to the database.

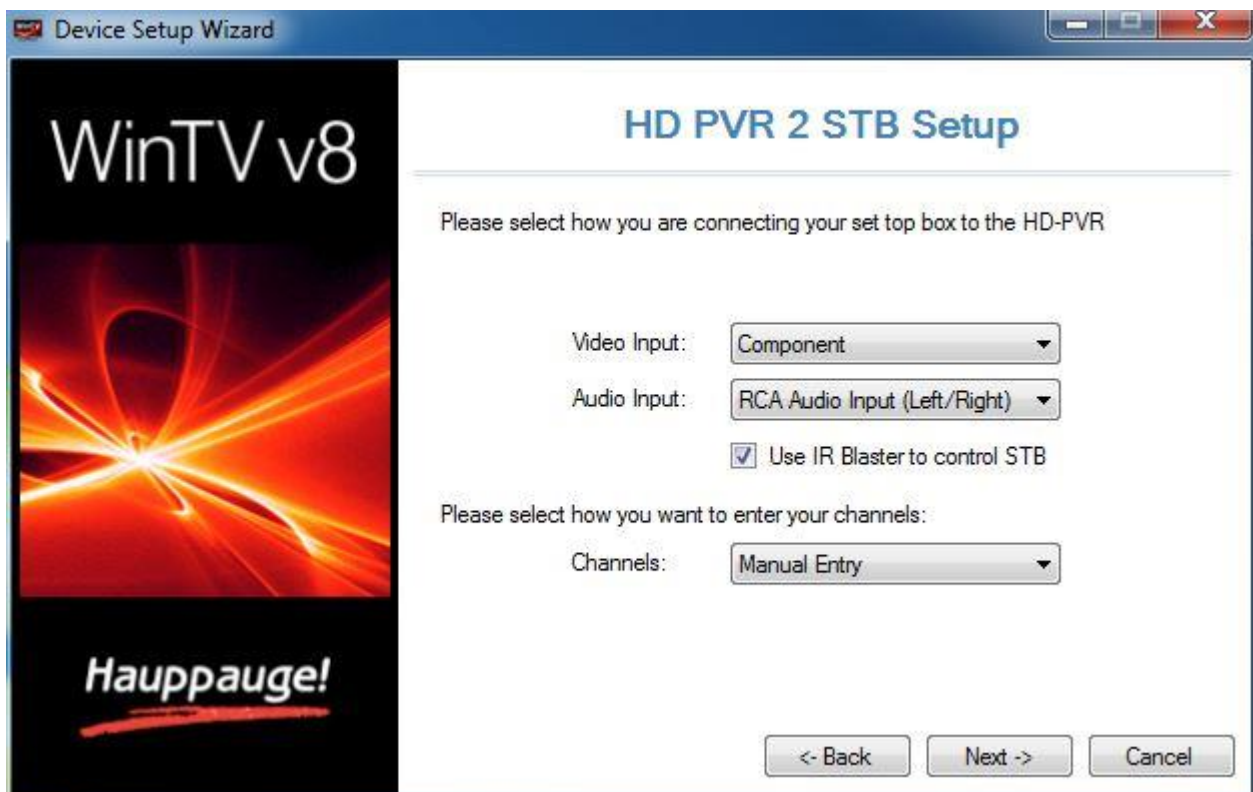
HD PVR 2 and Colossus

This section refers to HD PVR 2 and Colossus setup with WinTV 8.

The following is the typical Device Setup Wizard for both the HD PVR 2 and Colossus.



Set Top Box



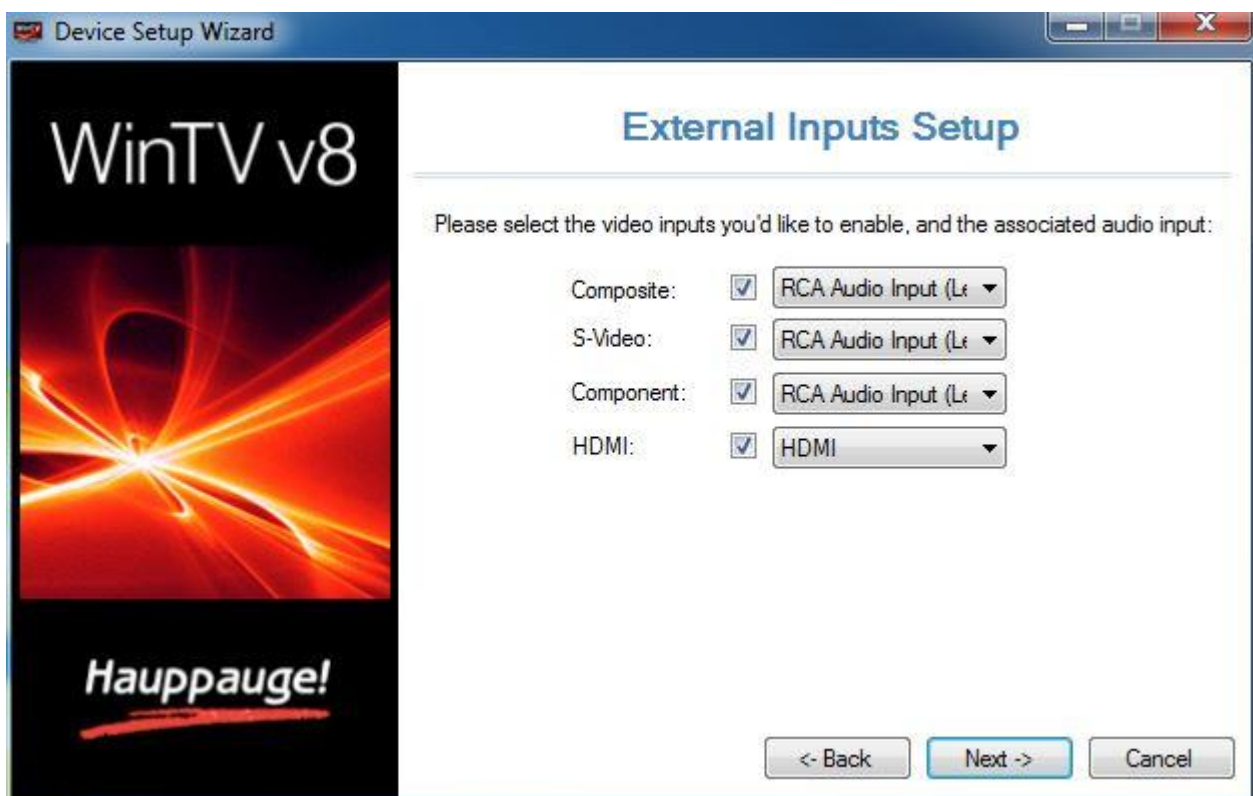
Video Input & Audio Input: Select the connection connected to the HD Capture Device.

Use IR Blaster to control STB: Check this if you wish to use the supplied IR Blaster.

Channels: Select between 'Manual Entry', 'Internet Lookup (USA only)', or 'Create Channel Range'.

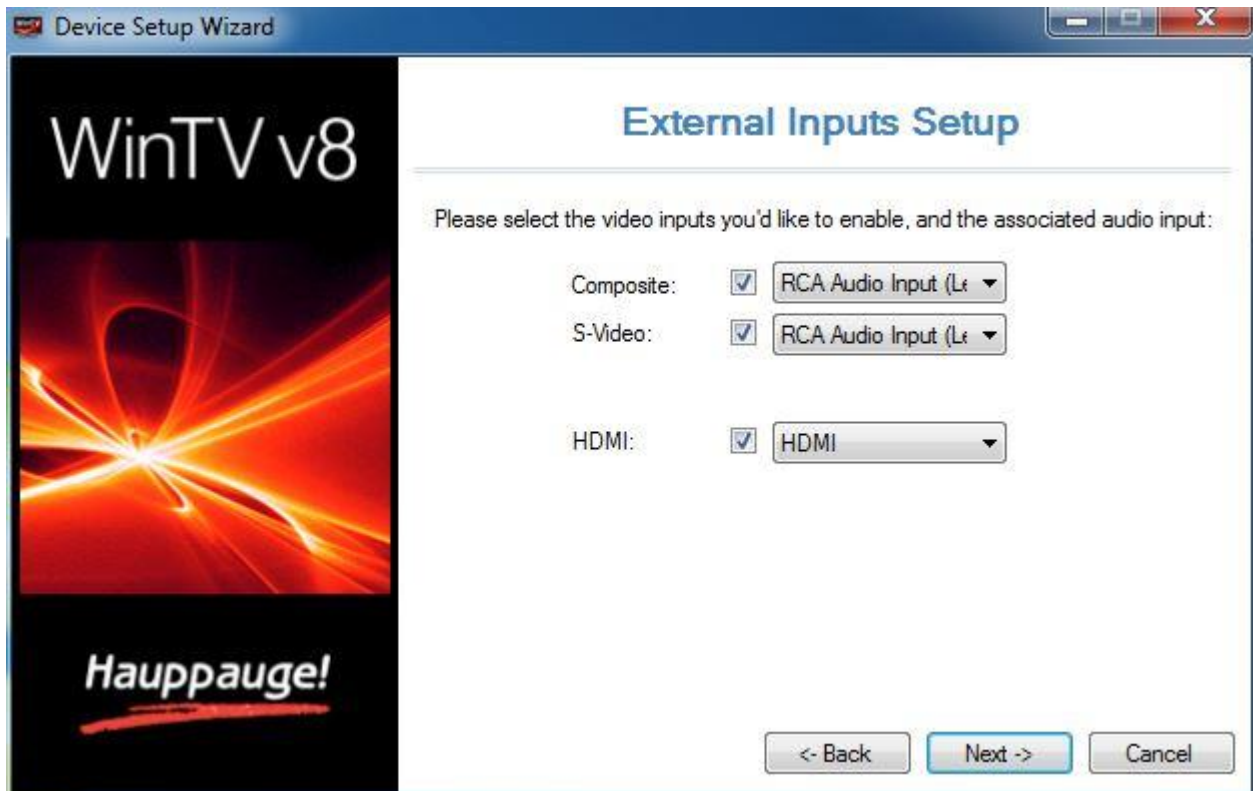
*More information available about these options under **Analog TV via Set Top Box**.*

Game Console



Select the game console type of input and audio you wish to use. The software will automatically add a channel for that source.

PC

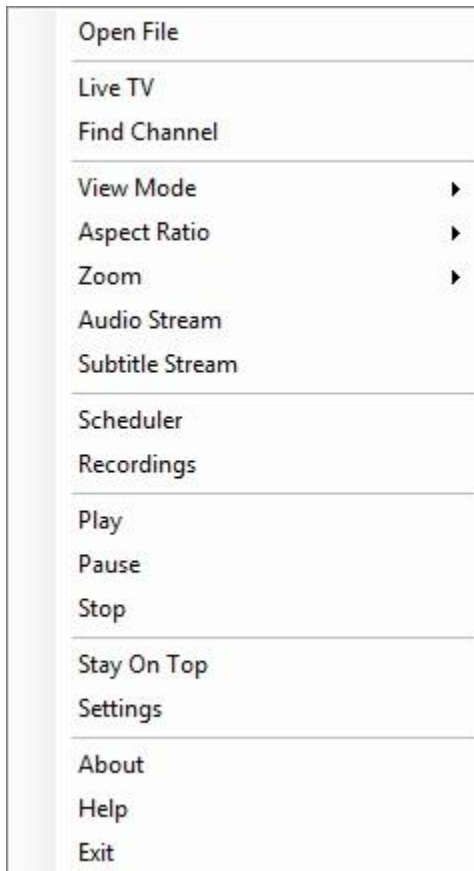


Select the game console type of input and audio you wish to use. The software will automatically add a channel for that source.

Click **Next** on any of the windows to finish the setup.

Menu Options

To bring up the Options Menu, click your **right** mouse button in the TV window.



The following menu options are available:

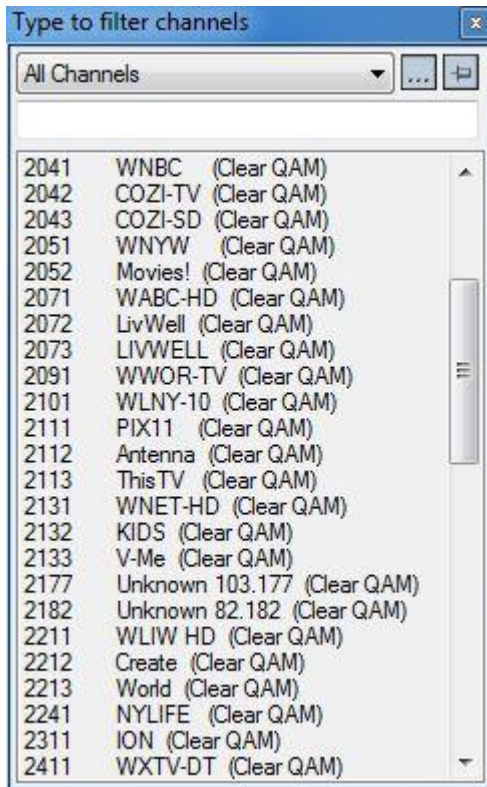
Option "Open File"

Click to open "recorded video files" directory to playback a file.


Option "Live TV"


Click to start Live TV.

Option "Find Channel"



Shows the channel list. Click on a channel entry to select this channel for watching. To filter the channel list, you can type in a channel name (or a part of the name).

The button with three dots  opens the dialog to manage your favorites.

Click on the Pin-Button  to permanently show the channel list.

The channel list will also be displayed if you enter any character (a - z) in live TV mode.

Option "View Mode"

The sub options **Normal**, **No Title** and **Full Screen** are available. In the **Normal** view all control elements and buttons are visible. In the **No Title** view only the TV image is shown. In the **Full Screen** view the TV image fills the whole screen. You can also switch between these views by double clicking inside the TV window, or by pressing `ctrl w`. Position and size of the application window for the **Normal** and **TV window only** views are saved separately.

Option "Aspect Ratio"

Selecting **Auto** will maintain the correct aspect ratio (4:3 or 16:9) of the TV image (recommended). Selecting **Fill** will make the TV image always fill out the complete video window, regardless of the dimension of the application window.

Option "Zoom"

Use this feature to "zoom" the live video a small percentage to eliminate unwanted lines at the very top or bottom of the Live TV image.

Option "Audio Stream"

If the current TV broadcast offers more than one audio language, you can select the language here.

Option "Subtitle Stream"

Choose closed caption or second language subtitles if available from TV broadcast.

Option "Scheduler"

The Scheduler allows you to record a TV program at a certain date and time on a specified channel.

Option "Recordings"

Opens recorded files list from Scheduler.

Options "Play", "Pause" and "Stop"

Use to pause video stream, play to restart or stop video stream.

Option "Stay On Top"

If enabled, the WinTV application window will remain in view over any other applications even if it is not selected. To turn on, select "Stay On Top". To turn off, select this option again.

Option "Settings"

Opens the settings dialog in WinTV.

Option "About"

This will tell you the version of WinTV 8 installed.

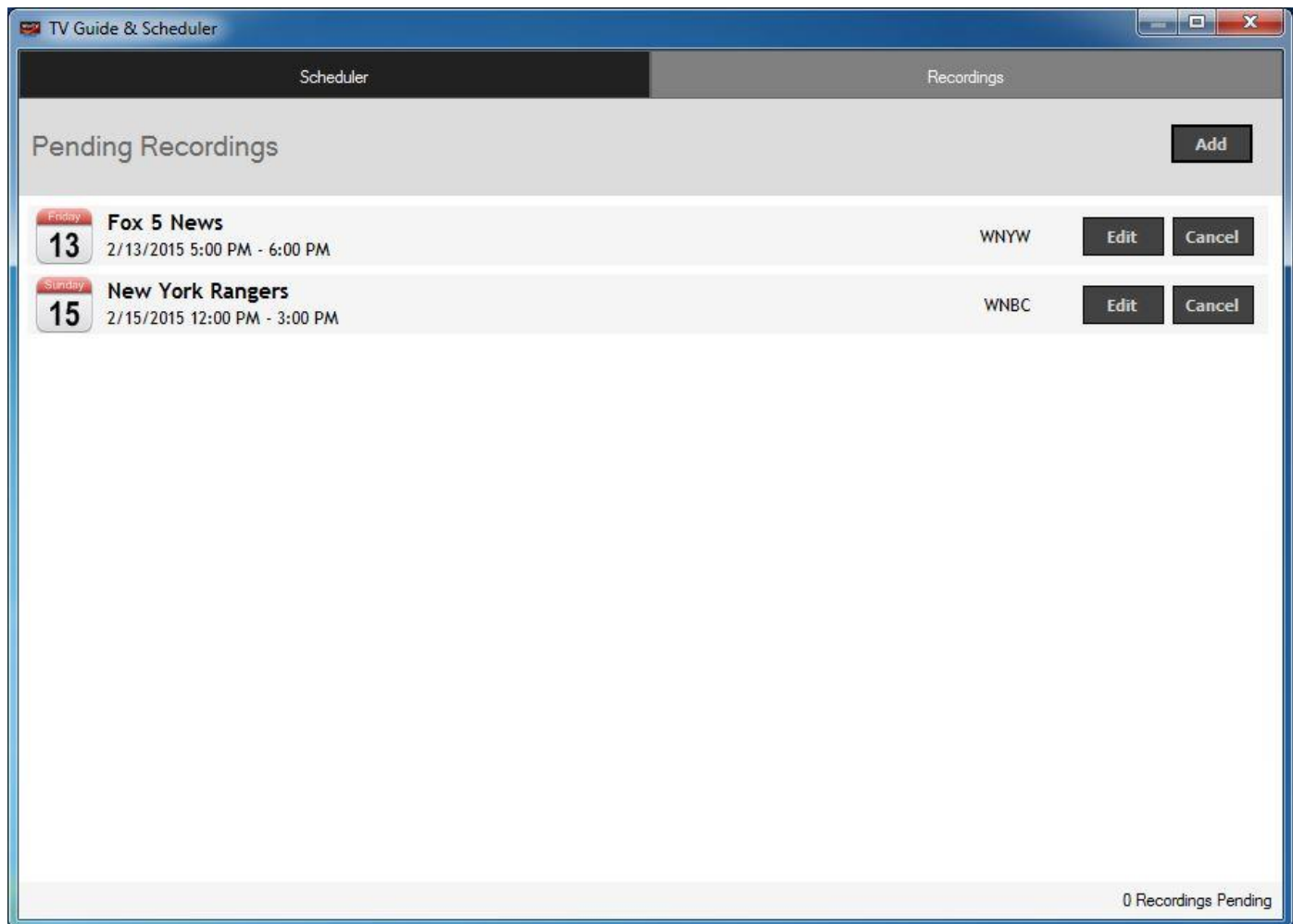
Option "Exit"

This will close the WinTV Application.

WinTV Scheduler

Select **Scheduler** from the Options Menu, to open the scheduler window.

The Scheduler allows you to record a TV program at a certain date and time on a specified channel. It will list all scheduled recordings that have been set.



From here you can manually **Add** or **Cancel** these schedule entries.

The **Cancel** button allows you to terminate a currently scheduled recording.

To schedule a recording, click on the **Add** button. You will need to set the following information:

Add Recording

Back

Record

Name:

Channel:

Start Time:

Duration (mins):

End Time:

Recording Quality:

At Completion:

Recurrence:

Start Date:

Name: The file name of your recording task. If you keep the name *Default*, the recording will use the name of the TV channel.

Channel: Choose the channel to record.

Start Time: Set to the desired start time.

Duration (Minutes): Set the length of the recording, using the arrows (steps of 30 minutes) or directly by the keyboard.

End Time: Alternative to the duration you can set the end time here.

Recording Quality: Specify the recording quality (analog TV only). On digital TV recordings the recording quality is always the original broadcast quality.

At Completion: Select the action that should be performed with the computer after the recording has finished. Choices are "Keep Running", "Shutdown", "Standby" and "Hibernate".

Recurrence: Record Once, Record Daily or Record Weekly: You can choose to have the recording repeat Once, Daily or Weekly.

The options will change depending on which recurrence you select

Recurrence: Record Daily

Start Date: Friday, February 13, 2015

End Date: Friday, February 13, 2015 Record Until Further Notice

Recurrence: Record Weekly

Start Date: Friday, February 13, 2015

End Date: Friday, February 13, 2015 Record Until Further Notice

Days to Record: Sunday Monday Tuesday Wednesday Thursday Friday Saturday

Start Date: Select the start date for the recording.

End Date: By default **Record Until Further Notice** will be checked and option will be grayed out. Uncheck this to specify a specific end date.

Days to Record: If you select the **Weekly** option, select the week day you wish to have the show recorded on.

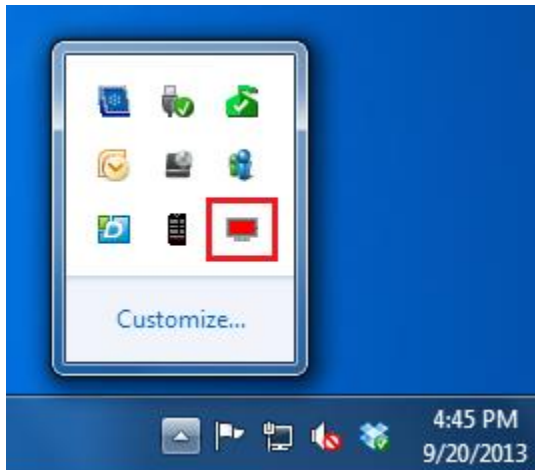
Once all the information is set, click **Record** to confirm. You can add more events by clicking **Add** after each event is set.

When you are finished, click **X** on top right corner to exit the scheduler.

Performing the Recording

The WinTV application does not have to be running for a Scheduled Recording to work, but your PC will need to be either turned ON or in Standby Mode. All scheduled recordings are performed in the background by a task called “WinTVRec.exe”.

When a recording takes place, this is indicated by a red icon in the system tray.



Right click on this icon to see the following options:

"Watch <file name>" - Opens the WinTV application to play the current recording.

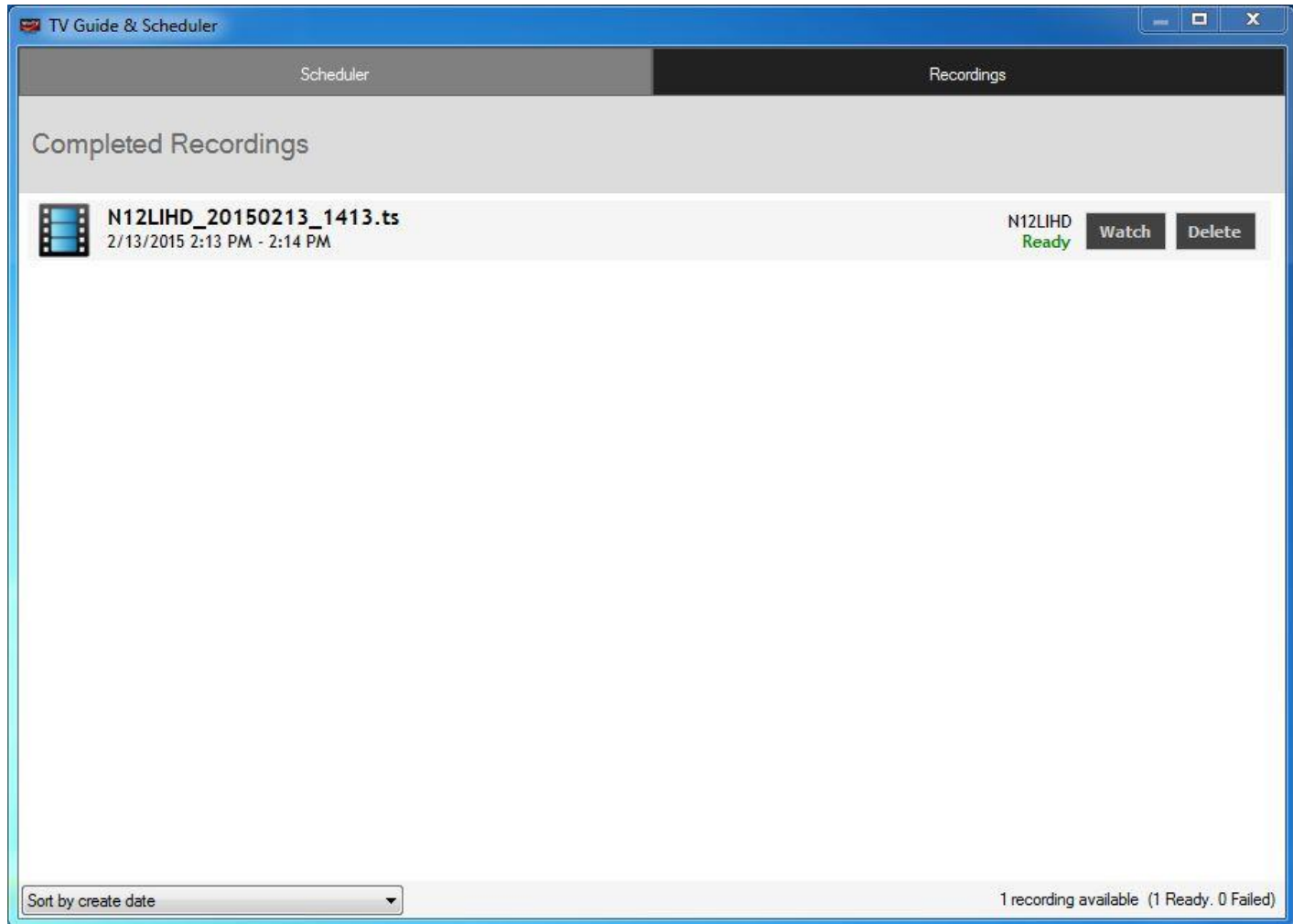
"Cancel Recording" - Terminates the recording.

Note: If you start the WinTV application while a recording is taking place on a single tuner product, it will play the current recording. Live TV will not be available.

WinTV Recordings

Select **Recordings** from the Options Menu, to open the recordings window.

The Recordings menu allows you see what has been recorded.



Watch will let you watch a recording through WinTV 8.

Delete will delete the recordings from WinTV and the computer.

Note: If you delete a recording from within WinTV Recordings, it will be moved to the Recycle Bin.

Sort By will let you sort recordings by date or name.

TitanTV

TitanTV is a free online TV Guide available for U.S. TV providers only.

TitanTV can make it easier to add scheduling recordings to WinTV Scheduler.

TitanTV Website

When WinTV 8 is installed the following shortcut icon is placed on the desktop.



You can double click it to go to the TitanTV website or manually type on your browser <http://www.titantv.com>

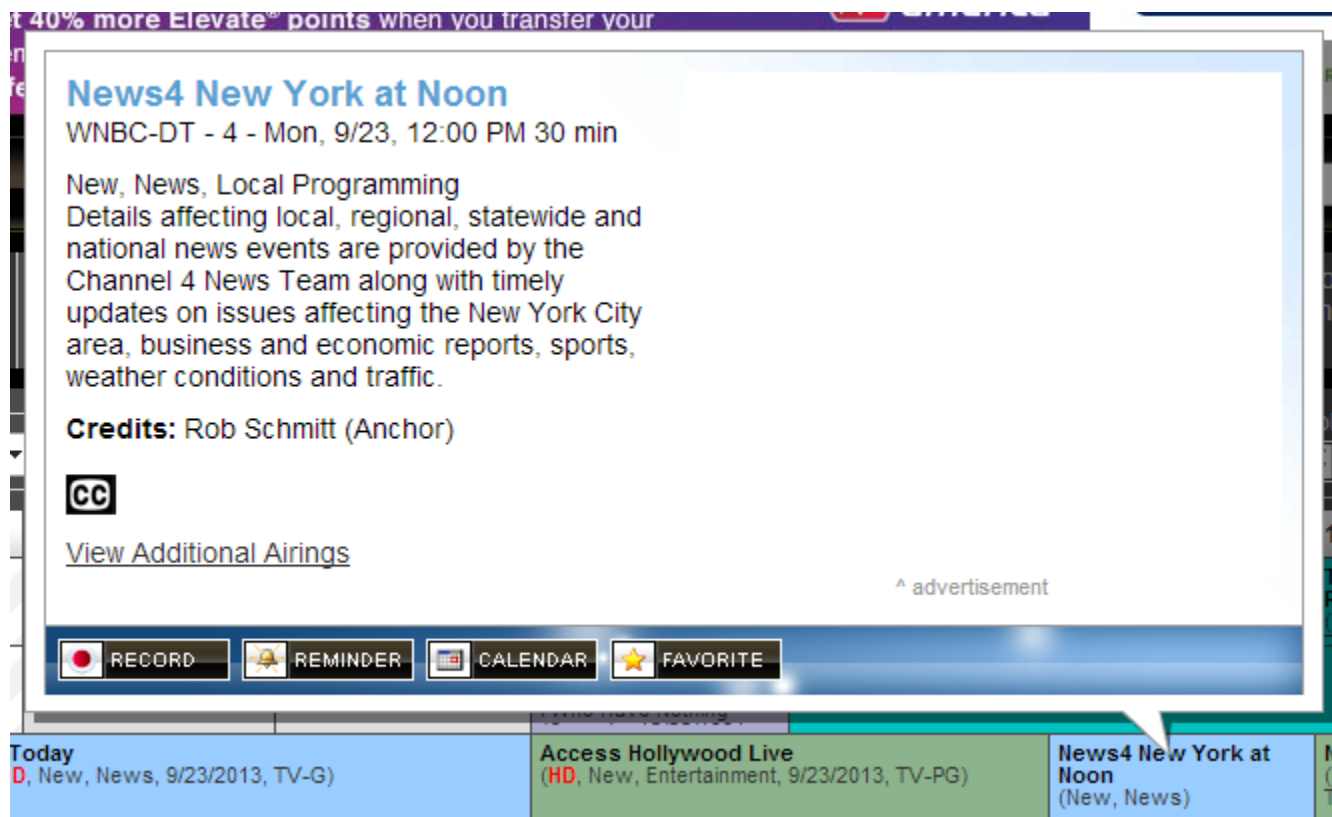
Under **Channel Lineup** you can select your provider or click **Add** to add your provider lineup.

The screenshot shows the TitanTV website interface. At the top, there is a navigation bar with the TitanTV logo, links for 'ANDROID APP ON Google play' and 'Available on the App Store', and a search bar. Below the navigation bar, there is a 'TITAN TIP' section with a printer icon and a message: 'The Print function sends a printer-friendly version of the currently channel listings to your printer.' The main content area is a TV guide for Monday, 09/23, at 10 AM. The guide is organized into a grid with columns for time slots (10 AM, 10:30 AM, 11 AM, 11:30 AM, 12 PM, 12:30 PM) and rows for channels (WCBS-DT, WPXN-TV, WNBC-DT, WNYW-DT1). Each cell in the grid contains the program name, its status (HD, New, etc.), and a brief description. For example, at 10 AM on WCBS-DT, the program is 'Let's Make a Deal'. At 11 AM on WPXN-TV, the program is 'Married ... with Children'. At 12 PM on WNBC-DT, the program is 'News4 New York at Noon'. At 12:30 PM on WNYW-DT1, the program is 'The Dr. Oz Show'. The interface also includes a 'Channel Lineup' dropdown menu set to 'Cablevision - Woodbury / Islip (Optimum)', an 'ADD' button, and a 'MANAGE' button. There are also 'Tools' buttons for 'MORE' and 'PRINT'.

No account is required with TitanTV, but you can make a free one so it remembers your preferences

Scheduled a Recording

To schedule a recordings with TitanTV, click on a TV show upcoming and on the window that opens click on **Record**.



The TV show selected will be added to the WinTV Scheduler.

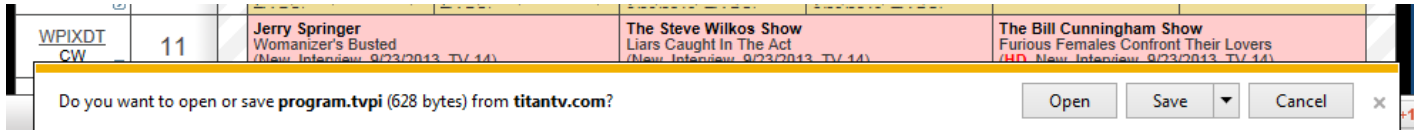
Scheduler		Recordings					
...	Recording Name	Next Run Time	Duration	End Time	Info	Quality	
	News4_New_York_at_N...	9/23/2013 12:00:00 PM	00:30	12:30:00 PM	WNBC	Digital Clear ...	

Note: In order to schedule a recording the channel number in the TitanTV must correspond to a channel in the WinTV 8 channel list. For example if you want to record WNBC and the channel number in TitanTV is 702 then you must edit the channels number in WinTV. All QAM channels are in the 2xxx range. All ATSC channels are in the 1xxx range.

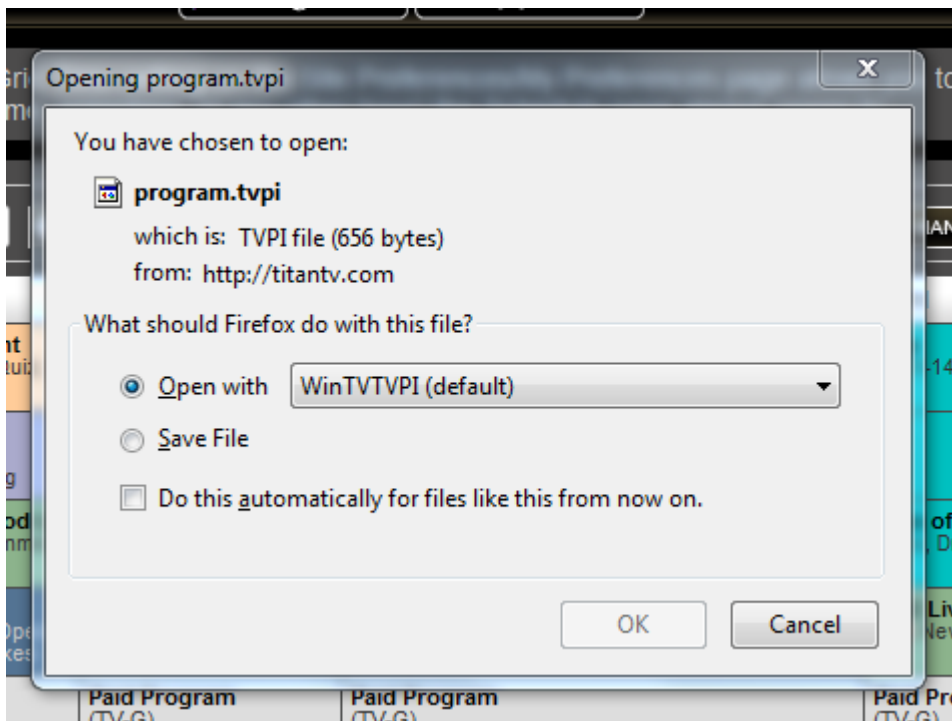
Browser Differences

When record is clicked a file 'program.tvpi' needs to be opened by our WinTV 8 software to schedule the recording. This file holds the information about the program that will be scheduled. But different browsers handle the file differently, some ask you to open or save it. In general you want to select open.

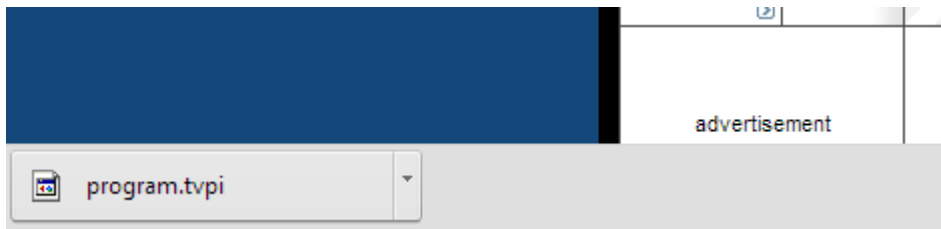
Internet Explorer: Internet Explorer will ask you on the bottom, please click **Open**.



Mozilla Firefox: Firefox will ask you in a window, please make sure **Open with** is selected and click **OK**.



Google Chrome: Google Chrome automatically saves the file. Please click the file on the bottom left corner to open.



Remote Control Buttons in WinTV 8

Some WinTV models include a remote control.



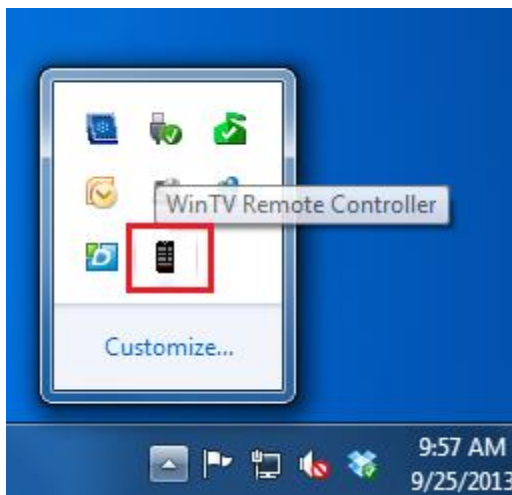
Hauppauge 45 button Model

Media Center Model


Credit Card Size Model 1

Credit Card Size Model 2

Remote Control Tray Icon



In order for the remote control to work, a **WinTV Remote Controller** application is installed during the WinTV 8 installation. This application needs to be running in the system tray in order for the remote control to work.

If the icon is not running, you can restart it by clicking on the  **Start button**. Then navigate to **All Programs, Hauppauge WinTV**, and click on **Restart IR**.






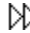
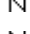


Hauppauge Model

Button	Function
Go	Start WinTV
Power	Exit WinTV
TV	Start Live TV
Videos	Show stream details
Music	(no function)
Pictures	Change aspect ratio between <i>fill</i> and <i>auto</i>
Guide	Show Now/Next info
Radio	(no function)
Arrow left/right	Change audio volume / Teletext: select next / previous subpage
Arrow up/down	Change channel / Teletext: select next / previous page
OK	Confirm selection (in channel list)
Back/Exit	Exit full screen / Close channel list
i (Menu)	Open channel list
Vol	Change audio volume
Prev.Ch	Select last channel
Mute	Mute / unmute audio
Ch	Change channel
●	Start recording
□	Stop recording / Exit Live TV
⏮	Skip back 30 seconds
▶	Continue Live TV or play back
⏭	Skip forward 30 seconds
⏮	Skip back 60 seconds
⏸	Pause Live TV
⏭	Skip forward 60 seconds



0 - 9	Enter channel preset number
* (Text)	Display teletext (if available)
# (Sub/CC)	Display subtitles (if available)
Red button	Start WinTV / Switch to full screen
Green button	(no function)
Yellow button	(no function)
Blue button	Make snapshot

Media Center Model

Button	Function
Power	Exit WinTV / Start Windows Media Center
	Start recording
	Pause Live TV
	Stop recording / Exit Live TV mode
	Skip back 30 seconds
	Continue Live TV or play back
	Skip forward 30 seconds
	Skip back 60 seconds
	Skip forward 60 seconds
	Exit full screen mode / Close channel list
<i>i</i>	Open channel list
Arrow left / right	Change audio volume / Teletext: select next / previous subpage
Arrow up / down	Change channel / Teletext: select next / previous page
OK	Confirm selection (in channel list)
+ / - bar left	Change audio volume
+ / - bar right	Change channel
Loudspeaker	Mute / unmute audio
TV rec	Open Recordings window
TV guide	Show Now/Next info
TV play	Start WinTV
DVD	Change aspect ratio between <i>fill</i> and <i>auto</i>
0 - 9	Enter channel preset number
*	(no function)
CLEAR	(no function)



ENTER	(no function)
#	(no function)
Red button	Start WinTV / Switch to full screen mode
Green button	(no function)
Yellow button	(no function)
Blue button	Make snapshot
T	Display teletext (if available)

Credit Card Size Remote Control 1

Button	Function
Back	Exit full screen mode / Close channel list
TV	Start Live TV
Go	Start WinTV
Power	Exit WinTV
Arrow left / right	Change audio volume / Teletext: select next / previous subpage
Arrow up / down	Change channel / Teletext: select next / previous page
OK	Confirm selection (in channel list)
⏮	Skip back 60 seconds
⏭	Skip forward 60 seconds
●	Start recording
□	Stop recording / Exit Live TV mode
⏸	Pause Live TV
▶	Continue Live TV or play back
⏪	Skip back 30 seconds
⏩	Skip forward 30 seconds
0 - 9	Enter channel preset number
Chan+ / Chan-	Change channel
Vol+ / Vol-	Change audio volume
Text	Display teletext (if available)



Menu	Open channel list
Prev. ch	Select last channel
Mute	Mute / unmute audio

Credit Card Size Remote Control 2

Button	Function
GO	Start WinTV
Power	Exit WinTV
Arrow left / right	Change audio volume / Teletext: select next / previous subpage
Arrow up / down	Change channel / Teletext: select next / previous page
OK	Confirm selection (in channel list)
Back	Exit full screen mode / Close channel list
Menu	Open channel list
TV	Start Live TV
VOL	Change audio volume
CH	Change channel
Loudspeaker	Mute / unmute audio
Prev	Select last channel
0 - 9	Enter channel preset number
Text	Display teletext (if available)
CC	Display subtitles (if available)
□	Stop recording / Exit Live TV mode
●	Start recording
⏮	Skip back 60 seconds
⏭	Skip forward 60 seconds
⏪	Skip back 30 seconds
⏸	Pause Live TV
⏩	Continue Live TV or play back
⏭	Skip forward 30 seconds



Keyboard Control in WinTV

Function	Key
Next Channel	Plus (+)
Previous Channel	Minus (-)
Increase Audio Volume	Page Up
Decrease Audio Volume	Page Down
Mute	Ctrl + M
Enter Preset Number	0 - 9
Jump to relative position during play back	0 - 9
Show Channel List	Ctrl + L
Make Snapshot	Space Bar
Show Now/Next	Ctrl + O
Display Stream Details	Ctrl + D
Subtitles on / off	Ctrl + S
Change Aspect Ratio	Ctrl + A
Zoom TV image	Alt + D
Pause Live TV	Ctrl + Q
Continue Live TV	Ctrl + P
Skip Ahead	Ctrl + F
Skip Back	Ctrl + R
Jump to Live Position	Ctrl + C
Full Screen	Ctrl + W
Exit Full Screen	Esc
Start TV	Alt + T
Start Recording	Alt + R
Stop Recording / Playback	Alt + S
Open File for Playback	Alt + F
Open WinTV Settings Dialog	Ctrl + I
Quick Channel Selection	a - z
Exit Application	Alt + F4

Advanced Information

Folders used by WinTV v8

On installation the following three folders are specified.

Program Folder

The executable files by default are stored into this folder:

C:\Program Files\WinTV Or C:\Program Files (x86)\WinTV

Data Directory

Configuration settings, scanning tables and log files are stored in the data directory. The location of this folder depends on the operating system.

Windows XP: C:\Documents and Settings\All Users\Share Documents\WinTV

Windows Vista: C:\Users\Public\WinTV

Windows 7: C:\Users\Public\WinTV

Windows 8: C:\Users\Public\WinTV

Recordings Directory

TV recordings and snapshots are saved into the recordings directory. The location of this folder depends on the operating system.

Windows XP: C:\Documents and Settings\All Users\Share Documents\Shared Videos

Windows Vista: C:\Users\Public\Videos

Vista:

Windows 7: C:\Users\Public\Videos

Windows 8: C:\Users\Public\Videos

Channel Database

The channel database is stored in the subfolder "Channel Database" in the Data Directory. In Windows 7, for example, this is:

C:\Users\Public\WinTV\Channel Database

Filename: hcwChanDB_5.mdb

The channel database holds the channel list, favorites and scheduled recordings.

Backup Database

A backup channel database is also created in case WinTV 8 is reinstalled.

In Windows XP it is located at `C:\Documents and Settings\All Users\Application Data\Hauppauge`

In Windows Vista, Windows 7, Windows 8, it is located at `C:\ProgramData\Hauppauge`

Note: These are windows hidden folders, you will have to display hidden files and folders to view them.

Command Line Parameters for WinTV8.exe

WinTV8.exe can be run with several command line parameters to enable certain functions. Some of these functions are already added to the Start menu under "Hauppauge WinTV" / "Advanced Options".

Program call with parameter	Name of shortcut in Start menu	Function
<code>WinTV8.exe -channel:4</code>	-	Starts WinTV8 on the channel with number 4 (example).
<code>WinTV8.exe -emptydb</code>	Empty Channel Database	Deletes all data in the channel database: scanned channels, defined favorites, scheduled recordings, device information. Note: Removal of this data happens without further confirmation.
<code>WinTV8.exe -multi</code>	-	Opens another instance of WinTV8. To explain: If WinTV8 is already running, and you double-click on the WinTV8 icon again, normally the already running program is just brought into foreground. But if WinTV8.exe is run with the parameter "-multi", another WinTV8 window is opened. So you could watch live TV in one window and play a recording in a second window. On a dual tuner product you can watch live TV in two WinTV8 windows.
<code>WinTV8.exe -recordings</code>	Open Recordings (only)	Only opens the Recordings tab of the scheduler.
<code>WinTV8.exe -scheduler</code>	Open Scheduler (only)	Only opens the Scheduler tab of the scheduler.

It is recommended to create a new WinTV8 icon and add the command line parameter under its properties. Following an example with the parameter "-multi":

1. Create a copy of the WinTV8-Icon on your desktop, by selecting the icon and pressing `<Ctrl> C` ("Copy"), and then `<Ctrl> V` ("Paste").
2. Right-click on the new icon and select "Properties" from the context menu.

3. Select the "Shortcut" tab. In the "Target:" field, after the program call add a space, and then the parameter, like this:

```
"C:\Program Files\WinTV\WinTV8\WinTV8.exe" -multi
```

Now, each time you double click on the new icon, a new WinTV8 window will be opened.